

For Research Use Only

# YIPF6 Polyclonal antibody, PBS Only

Catalog Number:30243-1-PBS



## Basic Information

Catalog Number:

30243-1-PBS

Source:

Rabbit

Isotype:

IgG

Immunogen Catalog Number:

AG32477

GenBank Accession Number:

BC012469

GeneID (NCBI):

286451

UNIPROT ID:

Q96EC8

Full Name:

Yip1 domain family, member 6

Calculated MW:

236 aa, 26 kDa

Observed MW:

55 kDa

Purification Method:

Antigen affinity purification

## Applications

Tested Applications:

WB, Indirect ELISA

Species Specificity:

human, mouse

## Background Information

YIPF6 encodes a Golgi- and ER-localized membrane protein that regulates vesicle trafficking and secretory pathway integrity through interaction with Rab GTPases. Highly expressed in intestinal epithelium and immune tissues, YIPF6 is essential for Paneth and goblet cell granule maturation and mucosal immune homeostasis. Loss of YIPF6 disrupts epithelial secretion and predisposes to inflammatory bowel-like disease, establishing it as a critical regulator of Golgi function and gut barrier defense.

## Storage

Storage:

Store at -80°C.

**The product is shipped with ice packs. Upon receipt, store it immediately at -80°C**

Storage Buffer:

PBS only, pH7.3

For technical support and original validation data for this product please contact:

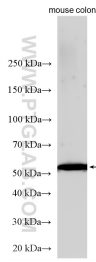
T: 4006900926

E: [Proteintech-CN@ptglab.com](mailto:Proteintech-CN@ptglab.com)

W: [ptgcn.com](http://ptgcn.com)

**This product is exclusively available under Proteintech Group brand and is not available to purchase from any other manufacturer.**

## Selected Validation Data



Various lysates were subjected to SDS PAGE followed by western blot with 30243-1-AP (YIPF6 antibody) at dilution of 1:1000 incubated at room temperature for 1.5 hours. This data was developed using the same antibody clone with 30243-1-PBS in a different storage buffer formulation.