

For Research Use Only

YIPF6 Polyclonal antibody

Catalog Number: 30243-1-AP



Basic Information

Catalog Number: 30243-1-AP	GenBank Accession Number: BC012469	Purification Method: Antigen affinity purification
Source: Rabbit	GeneID (NCBI): 286451	Recommended Dilutions: WB: 1:500-1:2000
Isotype: IgG	UNIPROT ID: Q96EC8	
Immunogen Catalog Number: AG32477	Full Name: Yip1 domain family, member 6	
	Calculated MW: 236 aa, 26 kDa	
	Observed MW: 55 kDa	

Applications

Tested Applications: WB, ELISA	Positive Controls: WB : mouse colon tissue,
Species Specificity: human, mouse	

Background Information

YIPF6 encodes a Golgi- and ER-localized membrane protein that regulates vesicle trafficking and secretory pathway integrity through interaction with Rab GTPases. Highly expressed in intestinal epithelium and immune tissues, YIPF6 is essential for Paneth and goblet cell granule maturation and mucosal immune homeostasis. Loss of YIPF6 disrupts epithelial secretion and predisposes to inflammatory bowel-like disease, establishing it as a critical regulator of Golgi function and gut barrier defense.

Storage

Storage:
Store at -20°C. Stable for one year after shipment.
Storage Buffer:
PBS with 0.02% sodium azide and 50% glycerol, pH7.3
Aliquoting is unnecessary for -20°C storage

For technical support and original validation data for this product please contact:

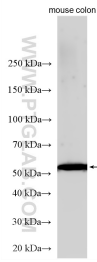
T: 4006900926

E: Proteintech-CN@ptglab.com

W: ptgcn.com

This product is exclusively available under Proteintech Group brand and is not available to purchase from any other manufacturer.

Selected Validation Data



Various lysates were subjected to SDS PAGE followed by western blot with 30243-1-AP (YIPF6 antibody) at dilution of 1:1000 incubated at room temperature for 1.5 hours.