

For Research Use Only

# QRICH1 Polyclonal antibody

Catalog Number: 30236-1-AP

Featured Product



## Basic Information

Catalog Number:

30236-1-AP

Concentration:

700 ug/ml

Source:

Rabbit

Isotype:

IgG

Immunogen Catalog Number:

AG31997

GenBank Accession Number:

BC110855

GeneID (NCBI):

54870

UNIPROT ID:

Q2TAL8

Full Name:

glutamine-rich 1

Observed MW:

85-110 kDa

Purification Method:

Antigen affinity purification

Recommended Dilutions:

WB 1:5000-1:50000

IHC 1:200-1:800

IF/ICC 1:200-1:800

## Applications

Tested Applications:

WB, IHC, IF/ICC, ELISA

Species Specificity:

human, mouse, rat

**Note-IHC: suggested antigen retrieval with TE buffer pH 9.0; (\*) Alternatively, antigen retrieval may be performed with citrate buffer pH 6.0**

Positive Controls:

WB : HEK-293T cells, Jurkat cells, NIH/3T3 cells

IHC : mouse testis tissue, rat brain tissue, human colon cancer tissue, human lung cancer tissue, mouse brain tissue, mouse stomach tissue

IF/ICC : U2OS cells,

## Background Information

Glutamine-rich protein 1 (QRICH1) is a transcriptional regulator that acts as a mediator of the integrated stress response (ISR) through transcriptional control of protein homeostasis under conditions of ER stress (PMID:33384352). QRICH1 is a member of the caspase recruitment domain (CARD)-containing gene family, which encodes for proteins implicated in regulation of caspase activation in the context of apoptosis and inflammation, and in regulation of NF- $\kappa$ B signaling (PMID:33384352). QRICH1 can be modified by phosphorylation.

## Storage

Storage:

Store at -20°C. Stable for one year after shipment.

Storage Buffer:

PBS with 0.02% sodium azide and 50% glycerol pH 7.3.

Aliquoting is unnecessary for -20°C storage

For technical support and original validation data for this product please contact:

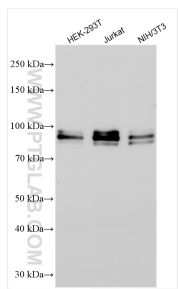
T: 4006900926

E: [Proteintech-CN@ptglab.com](mailto:Proteintech-CN@ptglab.com)

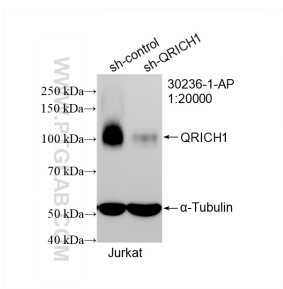
W: [ptgcn.com](http://ptgcn.com)

This product is exclusively available under Proteintech Group brand and is not available to purchase from any other manufacturer.

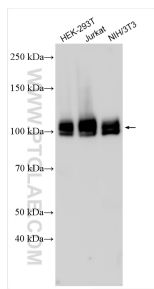
Selected Validation Data



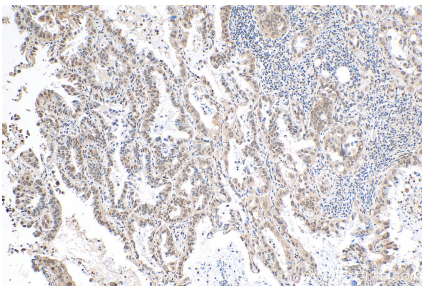
Various lysates were subjected to SDS PAGE followed by western blot with 30236-1-AP (QRICH1 antibody) at dilution of 1:2000 incubated at room temperature for 1.5 hours.



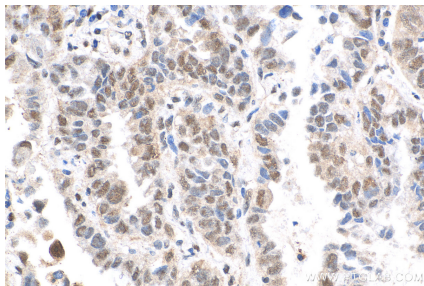
WB result of QRIC1 antibody (30236-1-AP; 1:20000; incubated at room temperature for 1.5 hours) with sh-Control and sh-QRIC1 transfected Jurkat cells.



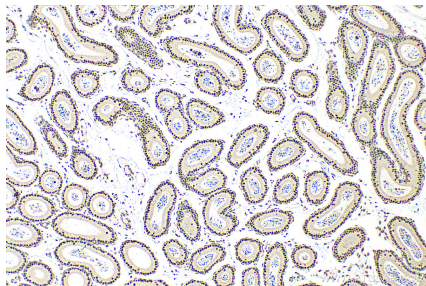
Various lysates were subjected to SDS PAGE followed by western blot with 30236-1-AP (QRICH1 antibody) at dilution of 1:10000 incubated at room temperature for 1.5 hours.



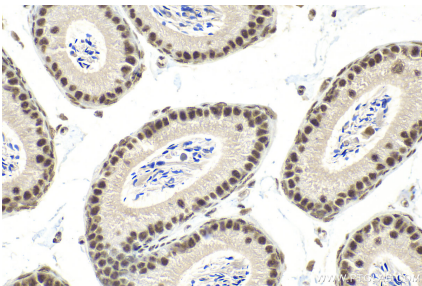
Immunohistochemical analysis of paraffin-embedded human lung cancer tissue slide using 30236-1-AP (QRICH1 antibody) at dilution of 1:200 (under 10x lens). Heat mediated antigen retrieval with Tris-EDTA buffer (pH 9.0).



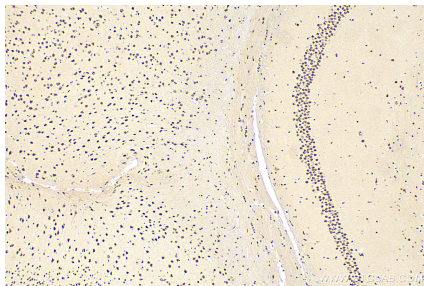
Immunohistochemical analysis of paraffin-embedded human lung cancer tissue slide using 30236-1-AP (QRICH1 antibody) at dilution of 1:200 (under 40x lens). Heat mediated antigen retrieval with Tris-EDTA buffer (pH 9.0).



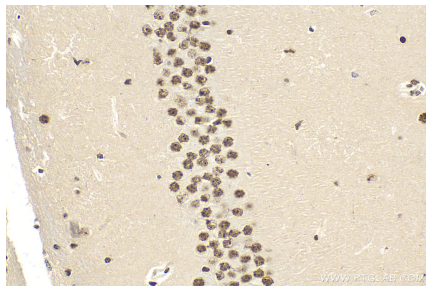
Immunohistochemical analysis of paraffin-embedded mouse testis tissue slide using 30236-1-AP (QRICH1 antibody) at dilution of 1:400 (under 10x lens). Heat mediated antigen retrieval with Tris-EDTA buffer (pH 9.0).



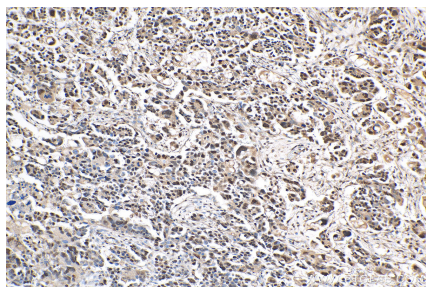
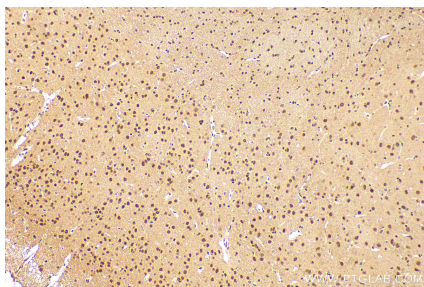
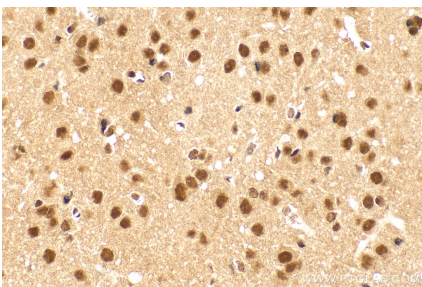
Immunohistochemical analysis of paraffin-embedded mouse testis tissue slide using 30236-1-AP (QRICH1 antibody) at dilution of 1:400 (under 40x lens). Heat mediated antigen retrieval with Tris-EDTA buffer (pH 9.0).



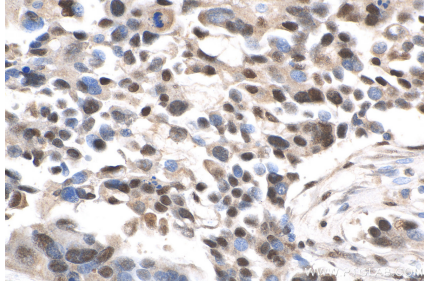
Immunohistochemical analysis of paraffin-embedded mouse brain tissue slide using 30236-1-AP (QRICH1 antibody) at dilution of 1:400 (under 10x lens). Heat mediated antigen retrieval with Tris-EDTA buffer (pH 9.0).



Immunohistochemical analysis of paraffin-embedded mouse brain tissue slide using 30236-1-AP (QRICH1 antibody) at dilution of 1:400 (under 40x lens). Heat mediated antigen retrieval with Tris-EDTA buffer (pH 9.0).

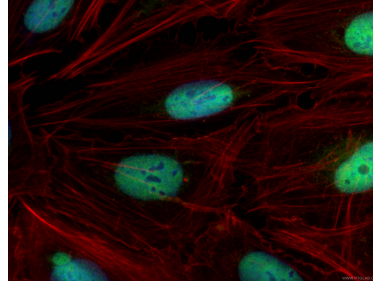


Immunohistochemical analysis of paraffin-embedded rat brain tissue slide using 30236-1-AP (QRICH1 antibody) at dilution of 1:200 (under 40x lens). Heat mediated antigen retrieval with Tris-EDTA buffer (pH 9.0).



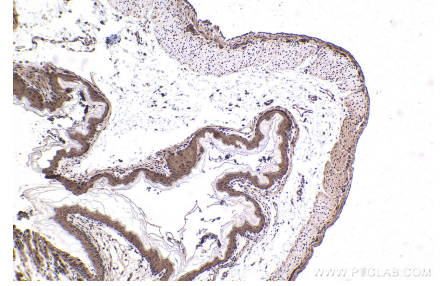
Immunohistochemical analysis of paraffin-embedded human colon cancer tissue slide using 30236-1-AP (QRICH1 antibody) at dilution of 1:200 (under 40x lens). Heat mediated antigen retrieval with Tris-EDTA buffer (pH 9.0).

Immunohistochemical analysis of paraffin-embedded rat brain tissue slide using 30236-1-AP (QRICH1 antibody) at dilution of 1:200 (under 10x lens). Heat mediated antigen retrieval with Tris-EDTA buffer (pH 9.0).



Immunofluorescent analysis of (4% PFA) fixed U2OS cells using QRICH1 antibody (30236-1-AP) at dilution of 1:400 and CoraLite®488-Conjugated AffiniPure Goat Anti-Rabbit IgG(H+L), CL594-Phalloidin (red).

Immunohistochemical analysis of paraffin-embedded human colon cancer tissue slide using 30236-1-AP (QRICH1 antibody) at dilution of 1:200 (under 10x lens). Heat mediated antigen retrieval with Tris-EDTA buffer (pH 9.0).



Immunohistochemical analysis of paraffin-embedded mouse stomach tissue slide using 30236-1-AP (QRICH1 antibody) at dilution of 1:1000 (under 10x lens). Heat mediated antigen retrieval with Tris-EDTA buffer (pH 9.0).