

For Research Use Only

WDR43 Polyclonal antibody, PBS Only

Catalog Number:30227-1-PBS



Basic Information

Catalog Number:

30227-1-PBS

Source:

Rabbit

Isotype:

IgG

Immunogen Catalog Number:

AG30585

GenBank Accession Number:

NM_015131

GeneID (NCBI):

23160

UNIPROT ID:

Q15061

Full Name:

WD repeat domain 43

Calculated MW:

75 kDa

Observed MW:

75 kDa

Purification Method:

Antigen affinity purification

Applications

Tested Applications:

WB, IHC, IF/ICC, Indirect ELISA

Species Specificity:

human

Background Information

WDR43, a WD40 domain-containing protein, is a conserved component of the small-subunit processome (SSUP), which mediates pre-18S ribosomal RNA (rRNA) transcription and processing in the nucleolus and is critical for ribosome biogenesis in yeast. Its mutation in zebrafish causes a variety of early developmental defects in specific tissues. WDR43 directly promotes ESC self-renewal by maintaining high-level expression of its target genes involved in pluripotency programs. (PMID: 28880863, 24497835, 31128943)

Storage

Storage:

Store at -80°C.

The product is shipped with ice packs. Upon receipt, store it immediately at -80°C

Storage Buffer:

PBS only, pH7.3

For technical support and original validation data for this product please contact:

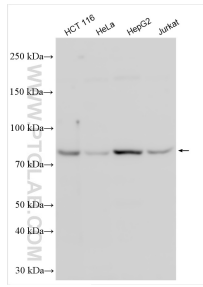
T: 4006900926

E: Proteintech-CN@ptglab.com

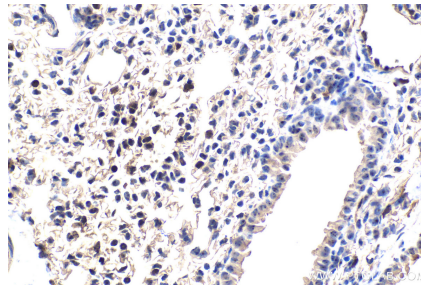
W: ptgcn.com

This product is exclusively available under Proteintech Group brand and is not available to purchase from any other manufacturer.

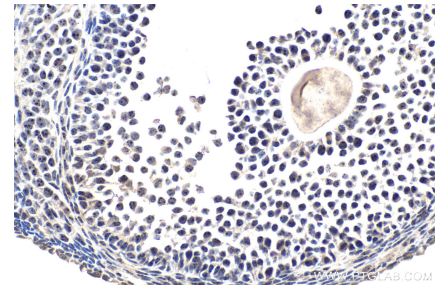
Selected Validation Data



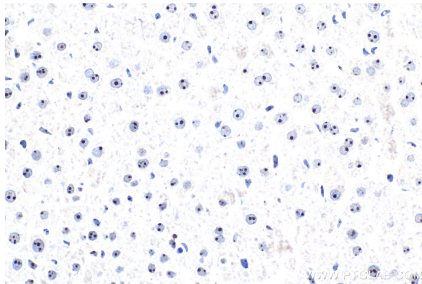
Various lysates were subjected to SDS PAGE followed by western blot with 30227-1-AP (WDR43 antibody) at dilution of 1:2000 incubated at room temperature for 1.5 hours. This data was developed using the same antibody clone with 30227-1-PBS in a different storage buffer formulation.



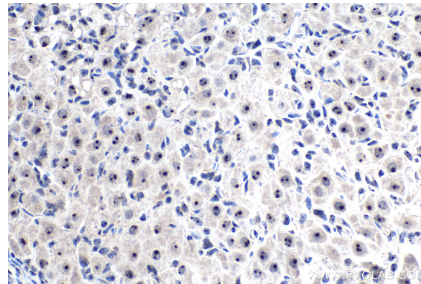
Immunohistochemical analysis of paraffin-embedded mouse lung tissue slide using 30227-1-AP (WDR43 antibody) at dilution of 1:1000 (under 40x lens). Heat mediated antigen retrieval with Tris-EDTA buffer (pH 9.0). This data was developed using the same antibody clone with 30227-1-PBS in a different storage buffer formulation.



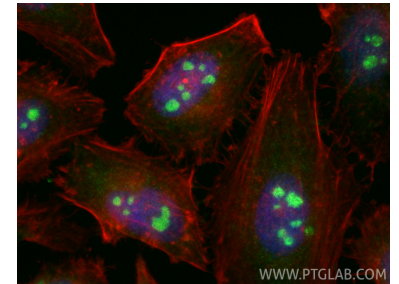
Immunohistochemical analysis of paraffin-embedded mouse ovary tissue slide using 30227-1-AP (WDR43 antibody) at dilution of 1:1000 (under 40x lens). Heat mediated antigen retrieval with Tris-EDTA buffer (pH 9.0). This data was developed using the same antibody clone with 30227-1-PBS in a different storage buffer formulation.



Immunohistochemical analysis of paraffin-embedded rat liver tissue slide using 30227-1-AP (WDR43 antibody) at dilution of 1:1000 (under 40x lens). Heat mediated antigen retrieval with Tris-EDTA buffer (pH 9.0). This data was developed using the same antibody clone with 30227-1-PBS in a different storage buffer formulation.



Immunohistochemical analysis of paraffin-embedded rat ovary tissue slide using 30227-1-AP (WDR43 antibody) at dilution of 1:1000 (under 40x lens). Heat mediated antigen retrieval with Tris-EDTA buffer (pH 9.0). This data was developed using the same antibody clone with 30227-1-PBS in a different storage buffer formulation.



Immunofluorescent analysis of (4% PFA) fixed HeLa cells using WDR43 antibody (30227-1-AP) at dilution of 1:200 and CoraLite@488-Conjugated Goat Anti-Rabbit IgG(H+L) (SA00013-2), CL594-phalloidin (red). This data was developed using the same antibody clone with 30227-1-PBS in a different storage buffer formulation.