

# Beta-2-Microglobulin Polyclonal antibody

Catalog Number: **30226-1-AP**

## Basic Information

### Catalog Number:

30226-1-AP

### Size:

1500 µg/ml

### Source:

Rabbit

### Isotype:

IgG

### GenBank Accession Number:

BC032589

### GeneID (NCBI):

567

### ENSEMBL Gene ID:

ENSG00000166710

### UNIPROT ID:

P61769

### Full Name:

beta-2-microglobulin

### Calculated MW:

119 aa, 14 kDa

### Observed MW:

12-14 kDa

### Purification Method:

Antigen affinity purification

### Recommended Dilutions:

WB 1:1000-1:4000

IF/ICC 1:200-1:800

## Applications

### Tested Applications:

IF/ICC, WB, ELISA

### Species Specificity:

Human

### Positive Controls:

WB : A431 cells, HepG2 cells, HeLa cells, U-937 cells, Jurkat cells, Raji cells

IF/ICC : NCCIT cells,

## Background Information

Beta-2-microglobulin (B2M) is a component of MHC class I molecules, which are present on the surface of nearly all nucleated cells. It can be found in body fluids under physiologic conditions as a result of shedding from cell surfaces or intracellular release. B2M has various biological functions, including antigen presentation. Investigations reveal that increased synthesis and release of B2M are present in several malignant diseases.

## Storage

### Storage:

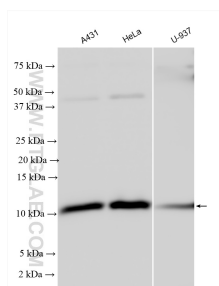
Store at -20°C. Stable for one year after shipment.

### Storage Buffer:

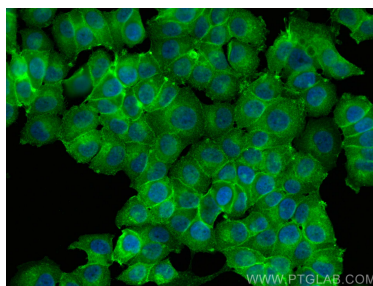
PBS with 0.02% sodium azide and 50% glycerol pH 7.3.

Aliquoting is unnecessary for -20°C storage

## Selected Validation Data



Various lysates were subjected to SDS PAGE followed by western blot with 30226-1-AP (Beta-2-Microglobulin antibody) at dilution of 1:2000 incubated at room temperature for 1.5 hours.



Immunofluorescent analysis of (4% PFA) fixed NCCIT cells using Beta-2-Microglobulin antibody (30226-1-AP) at dilution of 1:400 and CoraLite®488-Conjugated AffiniPure Goat Anti-Rabbit IgG(H+L).