

LCMT1 Polyclonal antibody

Catalog Number: 30222-1-AP

Basic Information

Catalog Number: 30222-1-AP	GenBank Accession Number: BC001214	Purification Method: Antigen affinity purification
Size: 500 µg/ml	GeneID (NCBI): 51451	Recommended Dilutions: WB 1:500-1:3000 IHC 1:50-1:500
Source: Rabbit	UNIPROT ID: Q9UIC8	
Isotype: IgG	Full Name: leucine carboxyl methyltransferase 1	
Immunogen Catalog Number: AG32038	Calculated MW: 38 kDa Observed MW: 38-41 kDa	

Applications

Tested Applications: IHC, WB, ELISA	Positive Controls:
Species Specificity: Human, Mouse	WB : A549 cells, HEK-293 cells, HeLa cells, HepG2 cells, MCF-7 cells, U-87 MG cells
Note-IHC: suggested antigen retrieval with TE buffer pH 9.0; (*) Alternatively, antigen retrieval may be performed with citrate buffer pH 6.0	IHC : mouse uterus tissue,

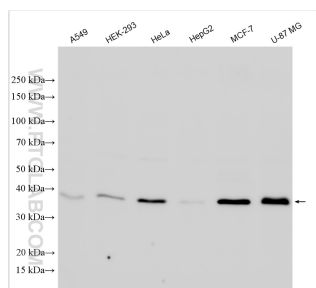
Background Information

Leucine carboxyl methyltransferase 1 (LCMT1) belongs to the methyltransferase superfamily (LCMT family). It methylates the carboxyl group of the C-terminal leucine residue of protein phosphatase 2A catalytic subunits to form alpha-leucine ester residues. LCMT1 has 3 isoforms with the MW of 38 kDa, 41 kDa, and 32 kDa.

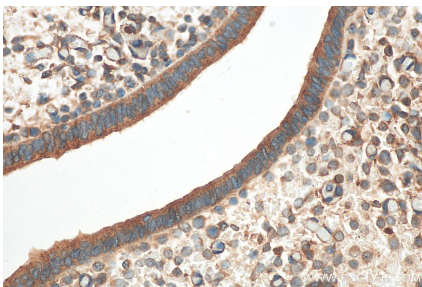
Storage

Storage:
Store at -20°C. Stable for one year after shipment.
Storage Buffer:
PBS with 0.02% sodium azide and 50% glycerol pH 7.3.
Aliquoting is unnecessary for -20°C storage

Selected Validation Data



Various lysates were subjected to SDS PAGE followed by western blot with 30222-1-AP (LCMT1 antibody) at dilution of 1:1500 incubated at room temperature for 1.5 hours.



Immunohistochemical analysis of paraffin-embedded mouse uterus tissue slide using 30222-1-AP (LCMT1 antibody) at dilution of 1:200 (under 40x lens). Heat mediated antigen retrieval with Tris-EDTA buffer (pH 9.0).