

BRAWNIN Polyclonal antibody

Catalog Number: 30212-1-AP

Basic Information

Catalog Number: 30212-1-AP	GenBank Accession Number: GeneID (NCBI): 728568	Purification Method: Antigen affinity purification
Size: 400 µg/ml	UNIPROT ID: Q69YU5	Recommended Dilutions: WB 1:400-1:1000 IF/ICC 1:200-1:800
Source: Rabbit	Full Name: chromosome 12 open reading frame 73	
Isotype: IgG	Calculated MW: 8 kDa	
Immunogen Catalog Number: AG32955	Observed MW: 9 kDa	

Applications

Tested Applications: IF/ICC, WB, ELISA	Positive Controls: WB : K-562 cells, MCF-7 cells IF/ICC : U-251 cells, A431 cells
Species Specificity: Human	

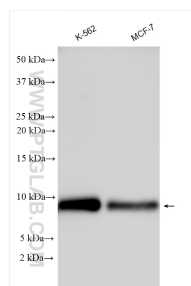
Background Information

Ubiquinol-cytochrome-c reductase complex assembly factor 6 (UQCC6) is also named as BRAWNIN, BR and C12orf73, and belongs to the UQCC6 family. BRAWNIN (BR), a 71 a.a. peptide encoded by C12orf73, is essential for respiratory chain complex III (CIII) assembly. In human cells, BRAWNIN is induced by the energy-sensing AMPK pathway, and its depletion impairs mitochondrial ATP production. In zebrafish, Brawnin deletion causes complete CIII loss, resulting in severe growth retardation, lactic acidosis and early death (PMID:32161263). BR is also detectable in human cardiac and skeletal muscle where it displays a staining pattern characteristic of the mitochondria network. BR protein abundance in mouse tissues correlated well with that of mitochondrial respiratory chain proteins, being high in brown adipose, cardiac and skeletal muscle but virtually undetectable in white adipose tissue (PMID:32161263). BR resides in the IMM and not in the outer mitochondrial membrane (OMM) (PMID:32161263).

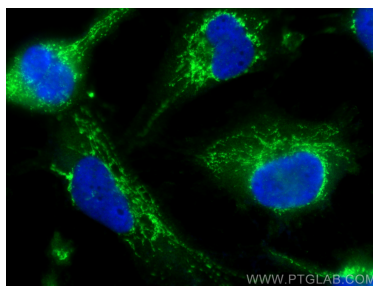
Storage

Storage:
Store at -20°C. Stable for one year after shipment.
Storage Buffer:
PBS with 0.02% sodium azide and 50% glycerol pH 7.3.
Aliquoting is unnecessary for -20°C storage

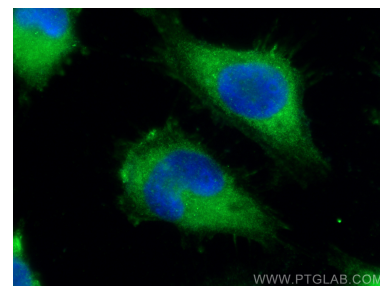
Selected Validation Data



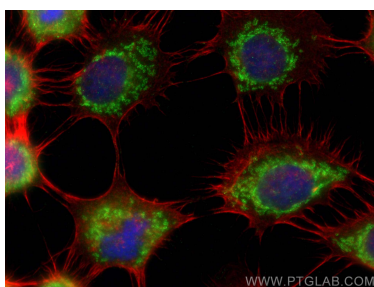
Various lysates were subjected to SDS PAGE followed by western blot with 30212-1-AP (BRAWNIN antibody) at dilution of 1:1000 incubated at room temperature for 1.5 hours.



Immunofluorescent analysis of (-20°C Ethanol) fixed U-251 cells using BRAWNIN antibody (30212-1-AP) at dilution of 1:400 and CoraLite® 488-Conjugated AffiniPure Goat Anti-Rabbit IgG(H+L).



Immunofluorescent analysis of (-20°C Ethanol) fixed U-251 cells using BRAWNIN antibody (30212-1-AP) at dilution of 1:400 and CoraLite® 488-Conjugated AffiniPure Goat Anti-Rabbit IgG(H+L).



Immunofluorescent analysis of (-20°C Ethanol) fixed A431 cells using BRAWNIN antibody (30212-1-AP) at dilution of 1:400 and CoraLite® 488-Conjugated AffiniPure Goat Anti-Rabbit IgG(H+L), CL594-phalloidin (red).