

For Research Use Only

# Ribosomal protein L4 Polyclonal antibody



Catalog Number: 30182-1-AP

Featured Product

## Basic Information

Catalog Number:

30182-1-AP

Size:

400 µg/ml

Source:

Rabbit

Isotype:

IgG

Immunogen Catalog Number:

AG32272

GenBank Accession Number:

BC009888

GeneID (NCBI):

6124

UNIPROT ID:

P36578

Full Name:

ribosomal protein L4

Calculated MW:

48 kDa

Observed MW:

48 kDa

Purification Method:

Antigen affinity purification

Recommended Dilutions:

WB 1:5000-1:50000

IF 1:200-1:800

## Applications

Tested Applications:

WB, IF/ICC, ELISA

Species Specificity:

Human

Positive Controls:

WB : HeLa cells, HepG2 cells

IF : HepG2 cells,

## Background Information

60S ribosomal protein L4 is encoded by RPL4 (or RPL1) gene. RPL4 is a component of 60S subunit of ribosome, and belongs to the L4E family. By interacting with c-Myb, RPL4 plays a important role in c-myc expression in response to growth factor and nutritional signals. Recently RPL4 was reported to be able to increase efficiency of viral recoding sequence.

## Storage

Storage:

Store at -20°C. Stable for one year after shipment.

Storage Buffer:

PBS with 0.02% sodium azide and 50% glycerol pH 7.3.

Aliquoting is unnecessary for -20°C storage

For technical support and original validation data for this product please contact:

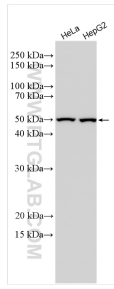
T: 4006900926

E: [Proteintech-CN@ptglab.com](mailto:Proteintech-CN@ptglab.com)

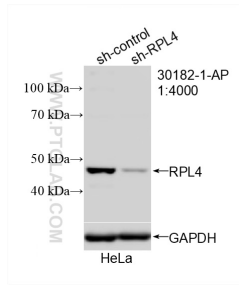
W: [ptgcn.com](http://ptgcn.com)

This product is exclusively available under Proteintech Group brand and is not available to purchase from any other manufacturer.

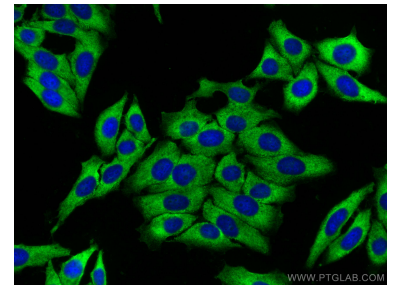
## Selected Validation Data



Various lysates were subjected to SDS PAGE followed by western blot with 30182-1-AP (Ribosomal protein L4 antibody) at dilution of 1:10000 incubated at room temperature for 1.5 hours.



WB result of Ribosomal protein L4 antibody (30182-1-AP; 1:4000; incubated at room temperature for 1.5 hours) with sh-Control and sh-Ribosomal protein L4 transfected HeLa cells.



Immunofluorescent analysis of (-20°C Ethanol) fixed HepG2 cells using Ribosomal protein L4 antibody (30182-1-AP) at dilution of 1:400 and CoraLite®488-Conjugated AffiniPure Goat Anti-Rabbit IgG(H+L).