

For Research Use Only

LACE1 Polyclonal antibody

Catalog Number: 30157-1-AP



Basic Information

Catalog Number:

30157-1-AP

Size:

450 µg/ml

Source:

Rabbit

Isotype:

IgG

Immunogen Catalog Number:

AG32827

GenBank Accession Number:

BC018445

GeneID (NCBI):

246269

UNIPROT ID:

Q8WV93

Full Name:

lactation elevated 1

Calculated MW:

54 kDa

Observed MW:

54-58 kDa

Purification Method:

Antigen affinity purification

Recommended Dilutions:

WB 1:500-1:2000

IF 1:50-1:500

Applications

Tested Applications:

IF/ICC, WB, ELISA

Species Specificity:

Human, mouse, rat

Positive Controls:

WB : A549 cells, HuH-7 cells, mouse liver tissue, rat liver tissue

IF : HepG2 cells,

Background Information

Storage

Storage:

Store at -20°C. Stable for one year after shipment.

Storage Buffer:

PBS with 0.02% sodium azide and 50% glycerol pH 7.3.

Aliquoting is unnecessary for -20°C storage

For technical support and original validation data for this product please contact:

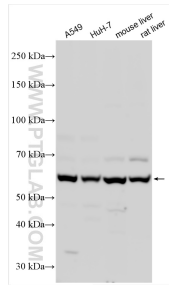
T: 4006900926

E: Proteintech-CN@ptglab.com

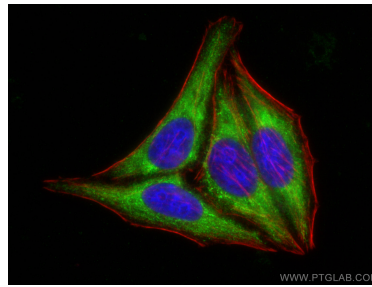
W: ptgcn.com

This product is exclusively available under Proteintech Group brand and is not available to purchase from any other manufacturer.

Selected Validation Data



Various lysates were subjected to SDS PAGE followed by western blot with 30157-1-AP (LACE1 antibody) at dilution of 1:1000 incubated at room temperature for 1.5 hours.



Immunofluorescent analysis of (-20°C Ethanol) fixed HepG2 cells using LACE1 antibody (30157-1-AP) at dilution of 1:200 and CoraLite® 488-Conjugated AffiniPure Goat Anti-Rabbit IgG(H+L), CL594-Phalloidin (red).