

For Research Use Only

# MLKL Polyclonal antibody

Catalog Number: 30145-1-AP

2 Publications



## Basic Information

Catalog Number:

30145-1-AP

Concentration:

500 ug/ml

Source:

Rabbit

Isotype:

IgG

Immunogen Catalog Number:

AG32514

GenBank Accession Number:

NM\_001310613

GeneID (NCBI):

74568

UNIPROT ID:

Q9D2Y4

Full Name:

mixed lineage kinase domain-like

Calculated MW:

54kd

Observed MW:

54 kDa

Purification Method:

Antigen affinity purification

Recommended Dilutions:

WB 1:1000-1:6000

IF/ICC 1:200-1:800

## Applications

Tested Applications:

WB, IF/ICC, ELISA

Cited Applications:

WB

Species Specificity:

mouse, rat

Cited Species:

mouse

Positive Controls:

WB : NIH/3T3 cells, HSC-T6 cells, 4T1 cells

IF/ICC : NIH/3T3 cells,

## Background Information

Mixed lineage kinase domain-like pseudokinase (MLKL) belongs to the protein kinase superfamily and has two MWs of 54 and 30 kDa. MLKL plays a critical role in tumor necrosis factor (TNF)-induced necroptosis, a programmed cell death process, via interaction with receptor-interacting protein 3 (RIP3), which is a key signaling molecule in the necroptosis pathway. High levels of this protein and RIP3 are associated with inflammatory bowel disease in children.

## Notable Publications

Author	Pubmed ID	Journal	Application
L Bai	39545792	Physiol Res	WB
Hui Liu	38446465	FASEB J	WB

## Storage

Storage:

Store at -20°C. Stable for one year after shipment.

Storage Buffer:

PBS with 0.02% sodium azide and 50% glycerol

Aliquoting is unnecessary for -20°C storage

For technical support and original validation data for this product please contact:

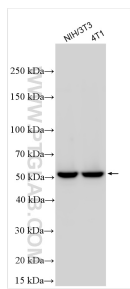
T: 4006900926

E: [Proteintech-CN@ptglab.com](mailto:Proteintech-CN@ptglab.com)

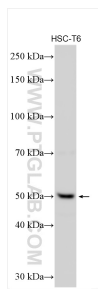
W: [ptgcn.com](http://ptgcn.com)

This product is exclusively available under Proteintech Group brand and is not available to purchase from any other manufacturer.

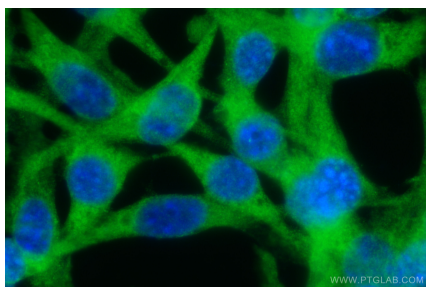
## Selected Validation Data



Various lysates were subjected to SDS PAGE followed by western blot with 30145-1-AP (Mkl antibody) at dilution of 1:3000 incubated at room temperature for 1.5 hours.



Various lysates were subjected to SDS PAGE followed by western blot with 30145-1-AP (Mkl antibody) at dilution of 1:2000 incubated at room temperature for 1.5 hours.



Immunofluorescent analysis of (-20°C Ethanol) fixed NIH/3T3 cells using Mkl antibody (30145-1-AP) at dilution of 1:400 and CoraLite®488-Conjugated AffiniPure Goat Anti-Rabbit IgG(H+L).