

For Research Use Only

CETP Polyclonal antibody

Catalog Number: 30136-1-AP



Basic Information

Catalog Number:

30136-1-AP

Size:

400 µg/ml

Source:

Rabbit

Isotype:

IgG

Immunogen Catalog Number:

AG32722

GenBank Accession Number:

BC025739

GeneID (NCBI):

1071

UNIPROT ID:

P11597

Full Name:

cholesteryl ester transfer protein,
plasma

Calculated MW:

493 aa, 55 kDa

Observed MW:

55 kDa, 70 kDa

Purification Method:

Antigen affinity purification

Recommended Dilutions:

WB 1:500-1:1000

Applications

Tested Applications:

WB, ELISA

Species Specificity:

Human

Positive Controls:

WB : HCT 116 cells, HT-29 cells, HepG2 cells, MCF-7 cells

Background Information

Cholesteryl ester transfer protein (CETP) is a plasma glycoprotein which transfers cholesteryl esters, triglycerides, and phospholipids between lipoproteins. In plasma, CETP is mainly associated with HDL particles and catalyzes the transfer of cholesteryl esters from HDL to apolipoprotein (apo) B-containing plasma lipoproteins. Low plasma concentrations of high-density lipoprotein-cholesterol (HDL-C) have long been recognized as a major, independent cardiovascular disease (CVD) risk factor. It demonstrated that altered level of plasma CETP was associated with the increased risk of CVD (PMID: 17991755, PMID: 23477743). CETP can be detected a 70 kDa isoform by glycosylation (PMID: 3281933, PMID: 22056562). It also can be detected 100 kDa dimer (PMID: 7744792).

Storage

Storage:

Store at -20°C. Stable for one year after shipment.

Storage Buffer:

PBS with 0.02% sodium azide and 50% glycerol pH 7.3.

Aliquoting is unnecessary for -20°C storage

For technical support and original validation data for this product please contact:

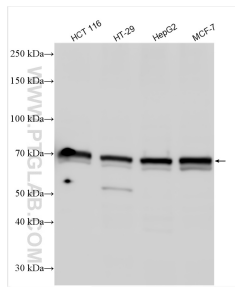
T: 4006900926

E: Proteintech-CN@ptglab.com

W: ptgcn.com

This product is exclusively available under Proteintech Group brand and is not available to purchase from any other manufacturer.

Selected Validation Data



Various lysates were subjected to SDS PAGE followed by western blot with 30136-1-AP (CPTP antibody) at dilution of 1:500 incubated at room temperature for 1.5 hours.