

For Research Use Only

CUL2 Polyclonal antibody

Catalog Number: 30071-1-AP



Basic Information

Catalog Number: 30071-1-AP	GenBank Accession Number: BC009591	Purification Method: Antigen affinity purification
Size: 260 µg/ml	GeneID (NCBI): 8453	Recommended Dilutions: WB 1:200-1:1000
Source: Rabbit	UNIPROT ID: Q13617	
Isotype: IgG	Full Name: cullin 2	
Immunogen Catalog Number: AG32331	Calculated MW: 87 kDa	
	Observed MW: 80-87 kDa	

Applications

Tested Applications: WB, ELISA	Positive Controls: WB : PC-3 cells, Raji cells, NIH/3T3 cells
Species Specificity: Human, mouse	

Background Information

The cullin family proteins are scaffold proteins for the Ring finger type E3 ligases, participating in the proteolysis through the ubiquitin-proteasome pathway. Humans express seven cullin proteins: CUL1-3, CUL4A, CUL4B, CUL5, and CUL7. Each cullin protein can form an E3 ligase similar to the prototype Ring-type E3 ligase Skp1-CUL1-F-box complex. The Cullin-RING-finger type E3 ligases are important regulators in early embryonic development, as highlighted by genetic studies demonstrating that knock-out of CUL1, CUL3, or CUL4A in mice results in early embryonic lethality.

Storage

Storage:
Store at -20°C. Stable for one year after shipment.
Storage Buffer:
PBS with 0.02% sodium azide and 50% glycerol pH 7.3.
Aliquoting is unnecessary for -20°C storage

For technical support and original validation data for this product please contact:

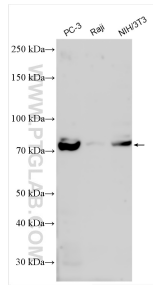
T: 4006900926

E: Proteintech-CN@ptglab.com

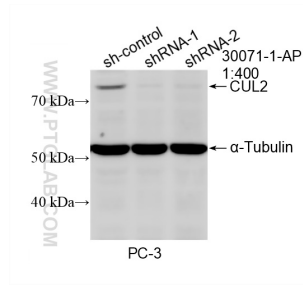
W: ptgcn.com

This product is exclusively available under Proteintech Group brand and is not available to purchase from any other manufacturer.

Selected Validation Data



Various lysates were subjected to SDS PAGE followed by western blot with 30071-1-AP (CUL2 antibody) at dilution of 1:400 incubated at room temperature for 1.5 hours.



WB result of CUL2 antibody (30071-1-AP; 1:400; incubated at room temperature for 1.5 hours) with sh-Control and sh-CUL2 transfected PC-3 cells.