

# CD35 Polyclonal antibody

Catalog Number: 30057-1-AP

## Basic Information

**Catalog Number:**

30057-1-AP

**Size:**

600 µg/ml

**Source:**

Rabbit

**Isotype:**

IgG

**Immunogen Catalog Number:**

AG30243

**GenBank Accession Number:**

NM\_000573

**GeneID (NCBI):**

1378

**ENSEMBL Gene ID:**

ENSG00000203710

**UNIPROT ID:**

P17927

**Full Name:**complement component (3b/4b)  
receptor 1 (Knops blood group)**Calculated MW:**

224 kDa

**Observed MW:**

250 kDa

**Purification Method:**

Antigen affinity purification

**Recommended Dilutions:**

WB 1:500-1:1000

## Applications

**Tested Applications:**

WB, ELISA

**Species Specificity:**

Human

**Positive Controls:**

WB: TF-1 cells,

## Background Information

CD35, also known as complement receptor type 1 (CR1) or C3b/C4b receptor, is a single-chain glycoprotein consisting of 30 repeating homologous protein domains known as short consensus repeats (~60 amino acids each) followed by transmembrane and cytoplasmic domains (PMID: 8765013). CD35 is variably expressed by granulocytes, monocytes, B cells, some T cells, erythrocytes, follicular dendritic cells, Langerhans cells, and glomerular podocytes (PMID: 19004497). CD35 acts as a receptor for C3b and C4b and plays important roles in the regulation of the complement cascade and clearance of immune complexes. A soluble form of CD35 has been found in plasma (PMID: 3156931). It has been reported that soluble CD35 is produced by a proteolytic cleavage in the C-terminal region of CD35 transmembrane domain (PMID: 9405292).

## Storage

**Storage:**

Store at -20°C. Stable for one year after shipment.

**Storage Buffer:**

PBS with 0.02% sodium azide and 50% glycerol pH 7.3.

Aliquoting is unnecessary for -20°C storage

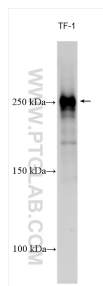
For technical support and original validation data for this product please contact:

T: 4006900926

E: [Proteintech-CN@ptglab.com](mailto:Proteintech-CN@ptglab.com)W: [ptgcn.com](http://ptgcn.com)

This product is exclusively available under Proteintech Group brand and is not available to purchase from any other manufacturer.

## Selected Validation Data



Various lysates were subjected to SDS PAGE followed by western blot with 30057-1-AP (CD35 antibody) at dilution of 1:600 incubated at room temperature for 1.5 hours.