

For Research Use Only

Collagen Type XII Polyclonal antibody, PBS Only

Catalog Number:30045-1-PBS



Basic Information

Catalog Number:

30045-1-PBS

Source:

Rabbit

Isotype:

IgG

Immunogen Catalog Number:

AG32602

GenBank Accession Number:

NM_004370

GeneID (NCBI):

1303

UNIPROT ID:

Q99715

Full Name:

collagen, type XII, alpha 1

Calculated MW:

333kd

Observed MW:

310-333 kDa

Purification Method:

Antigen affinity purification

Applications

Tested Applications:

WB, IF/ICC, Indirect ELISA

Species Specificity:

human, mouse

Background Information

COL12A1 (Collagen alpha-1(XII) chain), also known as COL12A1L. It is predicted to be located in the ECM. Type XII collagen interacts with type I collagen-containing fibrils, the COL1 domain could be associated with the surface of the fibrils, and the COL2 and NC3 domains may be localized in the periferibrillar matrix. The molecular weight of COL12A1 is 333 kDa.

Storage

Storage:

Store at -80°C.

The product is shipped with ice packs. Upon receipt, store it immediately at -80°C

Storage Buffer:

PBS only, pH7.3

For technical support and original validation data for this product please contact:

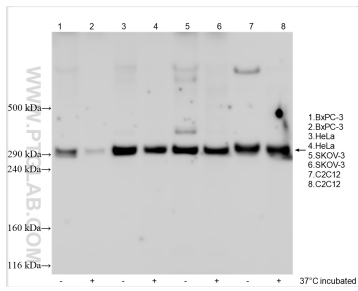
T: 4006900926

E: Proteintech-CN@ptglab.com

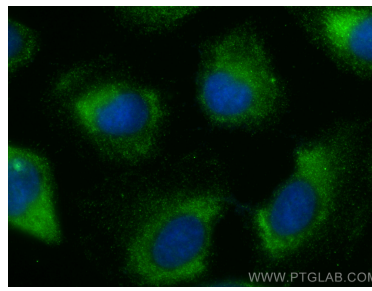
W: ptgcn.com

This product is exclusively available under Proteintech Group brand and is not available to purchase from any other manufacturer.

Selected Validation Data



Various lysates were subjected to Tris-Acetate gel system followed by western blot with 30045-1-AP (COL12A1 antibody) at dilution of 1:800 incubated at room temperature for 1.5 hours. This data was developed using the same antibody clone with 30045-1-PBS in a different storage buffer formulation.



Immunofluorescent analysis of (-20°C Methanol) fixed U2OS cells using COL12A1 antibody (30045-1-AP) at dilution of 1:200 and Multi-rAb CoraLite® Plus 488-Goat Anti-Rabbit Recombinant Secondary Antibody (H+L) (RGAR002). This data was developed using the same antibody clone with 30045-1-PBS in a different storage buffer formulation.