

KEAP1 Polyclonal antibody

Catalog Number: 30041-1-AP

Basic Information

Catalog Number:

30041-1-AP

Size:

600 µg/ml

Source:

Rabbit

Isotype:

IgG

Immunogen Catalog Number:

AG32512

GenBank Accession Number:

BC002930

GeneID (NCBI):

9817

UNIPROT ID:

Q14145

Full Name:

kelch-like ECH-associated protein 1

Calculated MW:

624 aa, 70 kDa

Observed MW:

55-70 kDa

Purification Method:

Antigen affinity purification

Recommended Dilutions:

WB 1:5000-1:50000

Applications

Tested Applications:

WB, ELISA

Species Specificity:

Human

Positive Controls:

WB : HEK-293 cells, HepG2 cells, Jurkat cells, MCF-7 cells, NK-92 cells

Background Information

KEAP1, also named as INRF2, KIAA0132 and KLHL19, is part of a multiprotein complex that contains the CUL3-ROC1 ubiquitin ligase, which can ubiquitinate the N-terminal domain of NRF2[PMID: 20173742]. Two molecules of KEAP1 bind to two distinct sites in the N-terminal region of NRF2, the ETGE and DLG sites, which affect the KEAP1-NRF2 interaction and/or its physiological consequences[PMID: 22215675]. KEAP1 retains NFE2L2/NRF2 in the cytosol. It functions as substrate adapter protein for the E3 ubiquitin ligase complex formed by CUL3 and RBX1[PMID: 20427290]. It also retains BPTF in the cytosol. This antibody is a rabbit polyclonal antibody raised against residues near the C terminus of human KEAP1.

Storage

Storage:

Store at -20°C. Stable for one year after shipment.

Storage Buffer:

PBS with 0.02% sodium azide and 50% glycerol pH 7.3.

Aliquoting is unnecessary for -20°C storage

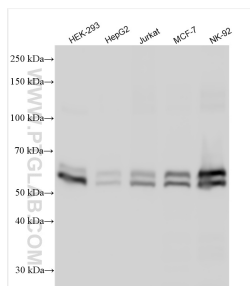
For technical support and original validation data for this product please contact:

T: 4006900926

E: Proteintech-CN@ptglab.comW: ptgcn.com

This product is exclusively available under Proteintech Group brand and is not available to purchase from any other manufacturer.

Selected Validation Data



Various lysates were subjected to SDS PAGE followed by western blot with 30041-1-AP (KEAP1 antibody) at dilution of 1:10000 incubated at room temperature for 1.5 hours.