

ATP2B1 Polyclonal antibody

Catalog Number: 30035-1-AP

Basic Information

Catalog Number: 30035-1-AP	GenBank Accession Number: NM_001001323.1	Purification Method: Antigen affinity purification
Size: 1000 µg/ml	GeneID (NCBI): 490	Recommended Dilutions: WB 1:5000-1:50000 IHC 1:500-1:2000
Source: Rabbit	UNIPROT ID: P20020	
Isotype: IgG	Full Name: ATPase, Ca ⁺⁺ transporting, plasma membrane 1	
Immunogen Catalog Number: AG32423	Calculated MW: 135 kDa	
	Observed MW: 130-180 kDa	

Applications

Tested Applications: WB, IHC, ELISA	Positive Controls:
Species Specificity: Human, mouse	WB : 37°C incubated mouse brain tissue,
Note-IHC: suggested antigen retrieval with TE buffer pH 9.0; (*) Alternatively, antigen retrieval may be performed with citrate buffer pH 6.0	IHC : human pancreas cancer tissue, human colon tissue

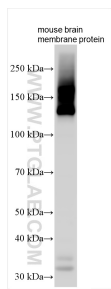
Background Information

ATPase plasma membrane Ca²⁺ transporting 1 (ATP2B1, also known as plasma membrane Ca²⁺ pump isoform 1; PMCA1) belongs to the family of ATP-driven calmodulin-dependent Ca²⁺ pumps that participate in the regulation of intracellular free Ca²⁺ (PMID:35358416). The ATP2B1 contents of extracellular vesicles are increased in prostate cancer treated with enzalutamide and are negatively regulated by androgen receptors (PMID:29105980). ATP2B1 plays an important role in the prognosis of cholangiocarcinoma. Furthermore, ATP2B1 plays an important role in the prognosis of cholangiocarcinoma and can be a prognostic factor for cholangiocarcinoma (PMID:35875160).

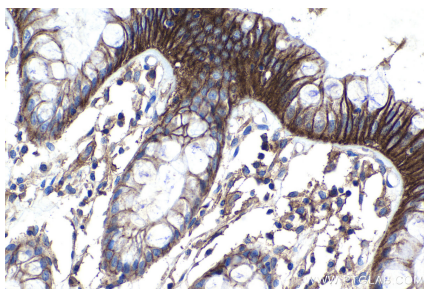
Storage

Storage:
Store at -20°C. Stable for one year after shipment.
Storage Buffer:
PBS with 0.02% sodium azide and 50% glycerol pH 7.3.
Aliquoting is unnecessary for -20°C storage

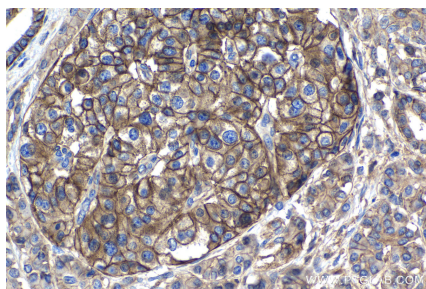
Selected Validation Data



Various lysates were subjected to SDS PAGE followed by western blot with 30035-1-AP (ATP2B1 antibody) at dilution of 1:10000 incubated at room temperature for 1.5 hours.



Immunohistochemical analysis of paraffin-embedded human colon tissue slide using 30035-1-AP (ATP2B1 antibody) at dilution of 1:1000 (under 40x lens). Heat mediated antigen retrieval with Tris-EDTA buffer (pH 9.0).



Immunohistochemical analysis of paraffin-embedded human pancreas cancer tissue slide using 30035-1-AP (ATP2B1 antibody) at dilution of 1:1000 (under 40x lens). Heat mediated antigen retrieval with Tris-EDTA buffer (pH 9.0).