

For Research Use Only

# SLC43A2 Polyclonal antibody

Catalog Number: 30031-1-AP



## Basic Information

Catalog Number:

30031-1-AP

Concentration:

650 ug/ml

Source:

Rabbit

Isotype:

IgG

Immunogen Catalog Number:

AG31341

GenBank Accession Number:

BC027923

GeneID (NCBI):

124935

UNIPROT ID:

Q8N370

Full Name:

solute carrier family 43, member 2

Calculated MW:

63 kDa

Observed MW:

48-53 kDa

Purification Method:

Antigen affinity purification

Recommended Dilutions:

WB 1:500-1:2000

IHC 1:500-1:2000

## Applications

Tested Applications:

WB, IHC, ELISA

Species Specificity:

human, mouse, rat

**Note-IHC: suggested antigen retrieval with TE buffer pH 9.0; (\*) Alternatively, antigen retrieval may be performed with citrate buffer pH 6.0**

Positive Controls:

**WB** : 37°C incubated mouse kidney tissue, mouse kidney tissue, mouse liver tissue, mouse liver tissue (37°C incubated), rat liver tissue

**IHC** : human placenta tissue,

## Background Information

### Storage

Storage:

Store at -20°C. Stable for one year after shipment.

Storage Buffer:

PBS with 0.02% sodium azide and 50% glycerol, pH7.3

Aliquoting is unnecessary for -20°C storage

For technical support and original validation data for this product please contact:

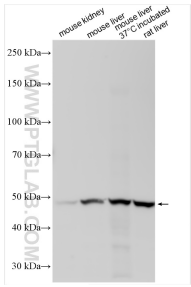
T: 4006900926

E: [Proteintech-CN@ptglab.com](mailto:Proteintech-CN@ptglab.com)

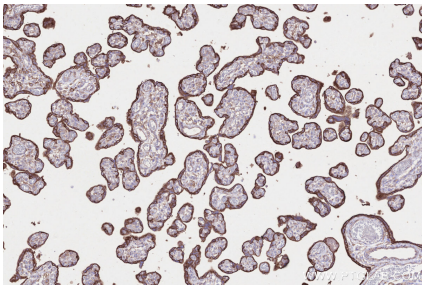
W: [ptgcn.com](http://ptgcn.com)

This product is exclusively available under Proteintech Group brand and is not available to purchase from any other manufacturer.

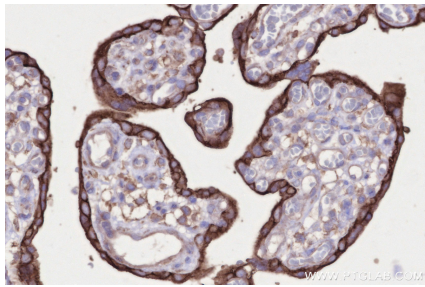
Selected Validation Data



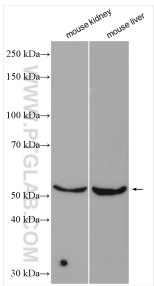
Various lysates were subjected to SDS PAGE followed by western blot with 30031-1-AP (SLC43A2 antibody) at dilution of 1:1000 incubated at room temperature for 1.5 hours.



Immunohistochemical analysis of paraffin-embedded human placenta tissue slide using 30031-1-AP (SLC43A2 antibody) at dilution of 1:1000 (under 10x lens). Heat mediated antigen retrieval with Tris-EDTA buffer (pH 9.0).



Immunohistochemical analysis of paraffin-embedded human placenta tissue slide using 30031-1-AP (SLC43A2 antibody) at dilution of 1:1000 (under 40x lens). Heat mediated antigen retrieval with Tris-EDTA buffer (pH 9.0).



Various lysates were subjected to SDS PAGE followed by western blot with 30031-1-AP (SLC43A2 antibody) at dilution of 1:1000 incubated at room temperature for 1.5 hours.