

# Fibulin 5 Polyclonal antibody

Catalog Number: 29992-1-AP

## Basic Information

<b>Catalog Number:</b> 29992-1-AP	<b>GenBank Accession Number:</b> BC022280	<b>Purification Method:</b> Antigen affinity purification
<b>Size:</b> 400 µg/ml	<b>GeneID (NCBI):</b> 10516	<b>Recommended Dilutions:</b> WB 1:2000-1:10000 IHC 1:50-1:500
<b>Source:</b> Rabbit	<b>UNIPROT ID:</b> Q9UBX5	
<b>Isotype:</b> IgG	<b>Full Name:</b> fibulin 5	
<b>Immunogen Catalog Number:</b> AG30835	<b>Calculated MW:</b> 448 aa, 50 kDa <b>Observed MW:</b> 65-70 kDa	

## Applications

### Tested Applications:

IHC, WB, ELISA

### Species Specificity:

Human, mouse, rat

**Note-IHC: suggested antigen retrieval with TE buffer pH 9.0; (\*) Alternatively, antigen retrieval may be performed with citrate buffer pH 6.0**

### Positive Controls:

**WB :** mouse heart tissue, mouse kidney tissue, rat heart tissue

**IHC :** human colon cancer tissue, mouse lung tissue, mouse colon tissue, human lung cancer tissue

## Background Information

Fibulin-5, also known as EVEC and DANCE, is an extracellular matrix glycoprotein, secreted by various cell types such as vascular smooth muscle cells, fibroblasts and endothelial cells. Structurally, Fibulin-5 contains an Arg-Gly-Asp (RGD) motif and calcium-binding EGF-like domains. It promotes adhesion of endothelial cells through interaction of integrins and the RGD motif. FBLN5 mutations have been described in patients with age-related macular degeneration, as well as being involved in Charcot-Marie-Tooth neuropathies.

## Storage

### Storage:

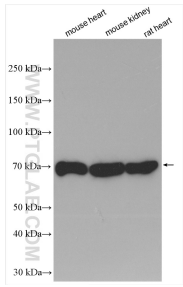
Store at -20°C. Stable for one year after shipment.

### Storage Buffer:

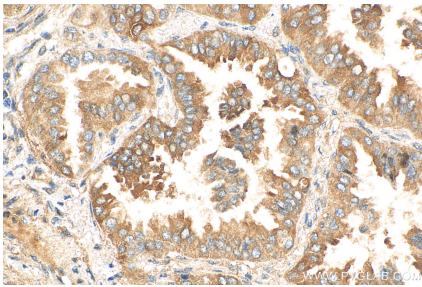
PBS with 0.02% sodium azide and 50% glycerol pH 7.3.

Aliquoting is unnecessary for -20°C storage

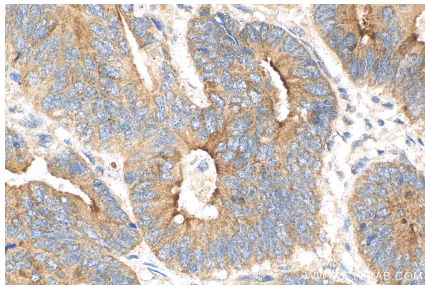
Selected Validation Data



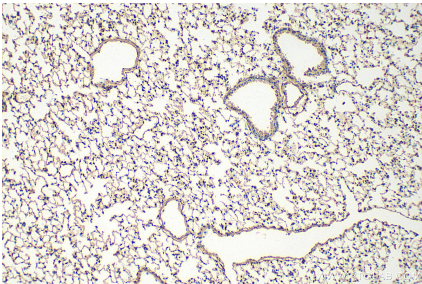
Various lysates were subjected to SDS PAGE followed by western blot with 29992-1-AP (Fibulin 5 antibody) at dilution of 1:5000 incubated at room temperature for 1.5 hours.



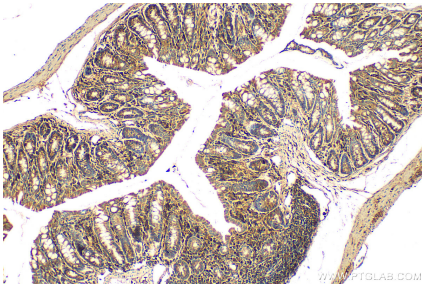
Immunohistochemical analysis of paraffin-embedded human lung cancer tissue slide using 29992-1-AP (Fibulin 5 antibody) at dilution of 1:200 (under 40x lens). Heat mediated antigen retrieval with Tris-EDTA buffer (pH 9.0).



Immunohistochemical analysis of paraffin-embedded human colon cancer tissue slide using 29992-1-AP (Fibulin 5 antibody) at dilution of 1:200 (under 40x lens). Heat mediated antigen retrieval with Tris-EDTA buffer (pH 9.0).



Immunohistochemical analysis of paraffin-embedded mouse lung tissue slide using 29992-1-AP (Fibulin 5 antibody) at dilution of 1:200 (under 10x lens). Heat mediated antigen retrieval with Tris-EDTA buffer (pH 9.0).



Immunohistochemical analysis of paraffin-embedded mouse colon tissue slide using 29992-1-AP (Fibulin 5 antibody) at dilution of 1:200 (under 10x lens). Heat mediated antigen retrieval with Tris-EDTA buffer (pH 9.0).