

For Research Use Only

PLA2G4E Polyclonal antibody

Catalog Number: 29990-1-AP



Basic Information

Catalog Number: 29990-1-AP	GenBank Accession Number: BC101584	Purification Method: Antigen affinity purification
Size: 700 µg/ml	GeneID (NCBI): 123745	Recommended Dilutions: WB 1:1000-1:8000 IF 1:200-1:800
Source: Rabbit	Full Name: phospholipase A2, group IVE	
Isotype: IgG	Calculated MW: 868 aa, 99 kDa	
Immunogen Catalog Number: AG32314	Observed MW: 98 kDa	

Applications

Tested Applications: IF/ICC, WB, ELISA	Positive Controls: WB : A431 cells, K-562 cells, NIH/3T3 cells
Species Specificity: Human, mouse, rat	IF : A431 cells,

Background Information

PLA2G4E (Phospholipase A2 group IVE), also known as cPLA2-epsilon. Calcium-dependent N-acyltransferase is involved in the biosynthesis of N-acyl ethanolamines (NAEs) in the brain (PMID:29447909). Transfers the sn-1 fatty acyl chain of phosphatidylcholine (fatty acyl donor) to the amine group of phosphatidylethanolamine (fatty acyl acceptor) to generate N-acyl phosphatidylethanolamine (NAPE). Similarly can use plasmenylethanolamine as a fatty acyl acceptor to form N-acyl plasmenylethanolamine (N-Acyl-PLsEt). Both NAPE and N-Acyl-PLsEt can serve as precursors of bioactive NAEs like N-arachidonoyl phosphatidylethanolamine also called anandamide (PMID:29447909; 30517655).

Storage

Storage:
Store at -20°C. Stable for one year after shipment.
Storage Buffer:
PBS with 0.02% sodium azide and 50% glycerol pH 7.3.
Aliquoting is unnecessary for -20°C storage

For technical support and original validation data for this product please contact:

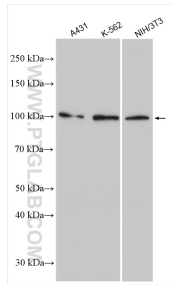
T: 4006900926

E: Proteintech-CN@ptglab.com

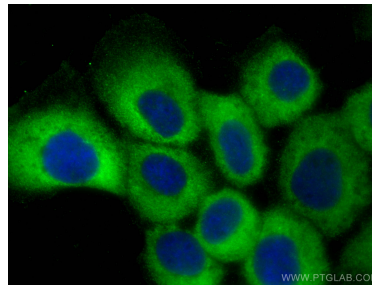
W: ptgcn.com

This product is exclusively available under Proteintech Group brand and is not available to purchase from any other manufacturer.

Selected Validation Data



Various lysates were subjected to SDS PAGE followed by western blot with 29990-1-AP (PLA2G4E antibody) at dilution of 1:4000 incubated at room temperature for 1.5 hours.



Immunofluorescent analysis of (-20°C Methanol) fixed A431 cells using PLA2G4E antibody (29990-1-AP) at dilution of 1:400 and CoraLite® 488-Conjugated AffiniPure Goat Anti-Rabbit IgG(H+L).