

IREB2 Polyclonal antibody

Catalog Number: 29976-1-AP

Basic Information

Catalog Number:

29976-1-AP

Size:

600 ug/ml

Source:

Rabbit

Isotype:

IgG

Immunogen Catalog Number:

AG32233

GenBank Accession Number:

BC017880

GeneID (NCBI):

3658

UNIPROT ID:

P48200

Full Name:

iron-responsive element binding protein 2

Calculated MW:

105 kDa

Observed MW:

105 kDa

Purification Method:

Antigen affinity purification

Recommended Dilutions:

WB 1:1000-1:8000

IP 0.5-4.0 ug for 1.0-3.0 mg of total protein lysate

IHC 1:200-1:800

IF/ICC 1:50-1:500

Applications

Tested Applications:

WB, IHC, IF/ICC, IP, ELISA

Species Specificity:

human, mouse

Note-IHC: suggested antigen retrieval with TE buffer pH 9.0; (*) Alternatively, antigen retrieval may be performed with citrate buffer pH 6.0

Positive Controls:

WB : mouse liver tissue,

IP : A549 cells, mouse liver tissue

IHC : human colon cancer tissue,

IF/ICC : A549 cells,

Background Information

IREB2 is an RNA-binding protein that acts to regulate iron levels in the cells by regulating the translation and stability of mRNAs that affect iron homeostasis under conditions when iron is depleted. When iron levels are low, this protein binds to iron-responsive elements (IRES), stem-loop structures located either in the 5' or 3' UTRs. Binding to the 5' UTR represses translation, while binding to the 3' UTR inhibits mRNA degradation. When iron is found in the cell, this protein is degraded in a F-box and leucine rich repeat protein 5-dependent manner.

Storage

Storage:

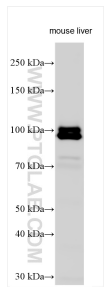
Store at -20°C. Stable for one year after shipment.

Storage Buffer:

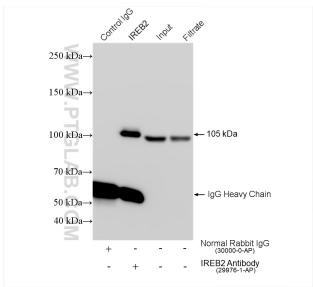
PBS with 0.02% sodium azide and 50% glycerol pH 7.3.

Aliquoting is unnecessary for -20°C storage

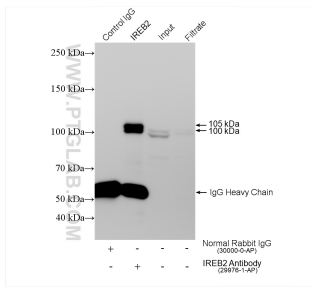
Selected Validation Data



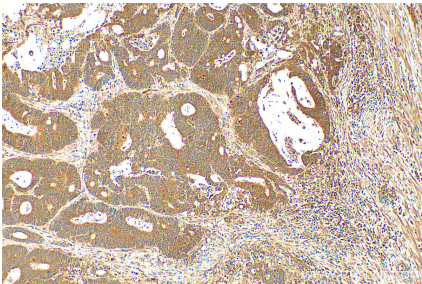
Various lysates were subjected to SDS PAGE followed by western blot with 29976-1-AP (IREB2 antibody) at dilution of 1:4000 incubated at room temperature for 1.5 hours.



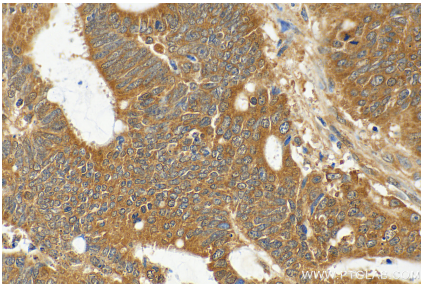
IP result of anti-IREB2 (IP:29976-1-AP, 4ug; Detection:29976-1-AP 1:5000) with mouse liver tissue lysate 1840 ug.



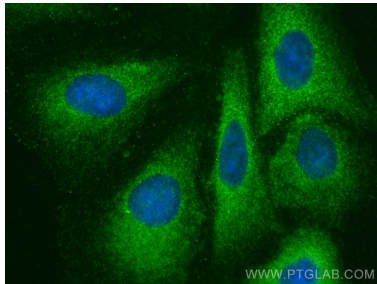
IP result of anti-IREB2 (IP:29976-1-AP, 4ug; Detection:29976-1-AP 1:1000) with A549 cells lysate 920 ug.



Immunohistochemical analysis of paraffin-embedded human colon cancer tissue slide using 29976-1-AP (IREB2 antibody) at dilution of 1:400 (under 10x lens). Heat mediated antigen retrieval with Tris-EDTA buffer (pH 9.0).



Immunohistochemical analysis of paraffin-embedded human colon cancer tissue slide using 29976-1-AP (IREB2 antibody) at dilution of 1:400 (under 40x lens). Heat mediated antigen retrieval with Tris-EDTA buffer (pH 9.0).



Immunofluorescent analysis of (-20°C Methanol) fixed A549 cells using IREB2 antibody (29976-1-AP) at dilution of 1:200 and CoraLite®488-Conjugated AffiniPure Goat Anti-Rabbit IgG(H+L).