

For Research Use Only

DOCK5 Polyclonal antibody, PBS Only

Catalog Number: 29938-1-PBS

Featured Product



Basic Information

Catalog Number:

29938-1-PBS

Size:

1 mg/ml

Source:

Rabbit

Isotype:

IgG

Immunogen Catalog Number:

AG32193

GenBank Accession Number:

BC137175

GeneID (NCBI):

80005

UNIPROT ID:

Q9H7D0

Full Name:

dedicator of cytokinesis 5

Calculated MW:

1870 aa, 215 kDa

Observed MW:

190 kDa

Purification Method:

Antigen affinity purification

Applications

Tested Applications:

WB, IHC, IF/ICC, IP, Indirect ELISA

Species Specificity:

human, mouse, rat

Background Information

DOCK5 is a member of the dedicator of cytokinesis protein family. Members of this family act as guanine nucleotide exchange factors for small Rho family G proteins. DOCK5 is thought to associate with adaptors CRK and CRKL, and function in regulation of intestinal epithelial cell spreading and migration on collagen IV.

Storage

Storage:

Store at -80°C.

The product is shipped with ice packs. Upon receipt, store it immediately at -80°C

Storage Buffer:

PBS Only

For technical support and original validation data for this product please contact:

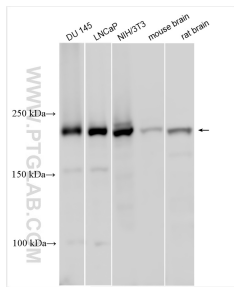
T: 4006900926

E: Proteintech-CN@ptglab.com

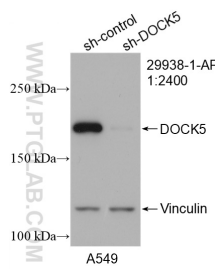
W: ptgcn.com

This product is exclusively available under Proteintech Group brand and is not available to purchase from any other manufacturer.

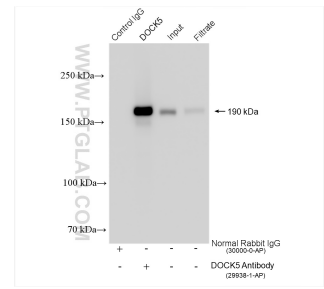
Selected Validation Data



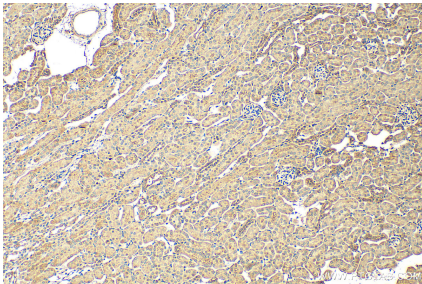
Various lysates were subjected to SDS PAGE followed by western blot with 29938-1-AP (DOCK5 antibody) at dilution of 1:1500 incubated at room temperature for 1.5 hours. This data was developed using the same antibody clone with 29938-1-PBS in a different storage buffer formulation.



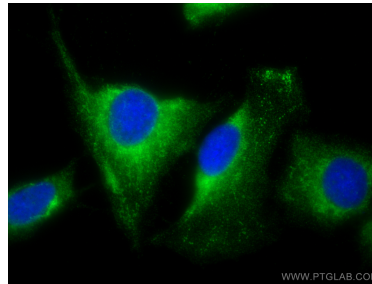
WB result of DOCK5 antibody (29938-1-AP; 1:2400; incubated at room temperature for 1.5 hours) with sh-Control and sh-DOCK5 transfected A549 cells. This data was developed using the same antibody clone with 29938-1-PBS in a different storage buffer formulation.



IP result of anti-DOCK5 (IP:29938-1-AP, 4ug; Detection:29938-1-AP 1:2000) with DU 145 cells lysate 1280 ug. This data was developed using the same antibody clone with 29938-1-PBS in a different storage buffer formulation.



Immunohistochemical analysis of paraffin-embedded mouse kidney tissue slide using 29938-1-AP (DOCK5 antibody) at dilution of 1:200 (under 10x lens). Heat mediated antigen retrieval with Tris-EDTA buffer (pH 9.0). This data was developed using the same antibody clone with 29938-1-PBS in a different storage buffer formulation.



Immunofluorescent analysis of (-20°C Methanol) fixed U2OS cells using DOCK5 antibody (29938-1-AP) at dilution of 1:200 and CoraLite@488-Conjugated AffiniPure Goat Anti-Rabbit IgG(H+L). This data was developed using the same antibody clone with 29938-1-PBS in a different storage buffer formulation.