

For Research Use Only

# RIPK1 Polyclonal antibody

Catalog Number: 29932-1-AP **1 Publications**



## Basic Information

<b>Catalog Number:</b> 29932-1-AP	<b>GenBank Accession Number:</b> NM_003804	<b>Purification Method:</b> Antigen affinity purification
<b>Size:</b> 650 µg/ml	<b>GeneID (NCBI):</b> 8737	<b>Recommended Dilutions:</b> WB 1:1000-1:8000
<b>Source:</b> Rabbit	<b>UNIPROT ID:</b> Q13546	
<b>Isotype:</b> IgG	<b>Full Name:</b> receptor (TNFRSF)-interacting serine-threonine kinase 1	
<b>Immunogen Catalog Number:</b> AG31950	<b>Calculated MW:</b> 76KD	
	<b>Observed MW:</b> 70-80 kDa	

## Applications

<b>Tested Applications:</b> WB, ELISA	<b>Positive Controls:</b> WB : K-562 cells, MCF-7 cells, mouse liver tissue, rat liver tissue
<b>Cited Applications:</b> WB	
<b>Species Specificity:</b> Human, mouse, rat	
<b>Cited Species:</b> rat	

## Background Information

RIPK1(Receptor-interacting serine/threonine-protein kinase 1) is primarily involved in mediating TNF-R1-induced cell activation, apoptosis, and necroptosis and belongs to a novel class of kinases that function in cell survival and cell death mechanisms(PMID:22685397 ). It has 2 isoforms produced by alternative splicing. It also can exist as a protein with a lower molecular weight of about 25 kDa and 45 kDa in HAEC and HUVEC(PMID:22685397).

## Notable Publications

Author	Pubmed ID	Journal	Application
Xiuhua Zhu	37152604	Front Neurosci	WB

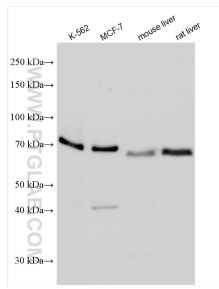
## Storage

**Storage:**  
Store at -20°C. Stable for one year after shipment.  
**Storage Buffer:**  
PBS with 0.02% sodium azide and 50% glycerol pH 7.3.  
Aliquoting is unnecessary for -20°C storage

For technical support and original validation data for this product please contact:  
T: 4006900926 E: Proteintech-CN@ptglab.com W: ptgcn.com

**This product is exclusively available under Proteintech Group brand and is not available to purchase from any other manufacturer.**

## Selected Validation Data



Various lysates were subjected to SDS PAGE followed by western blot with 29932-1-AP (RIPK1 antibody) at dilution of 1:4000 incubated at room temperature for 1.5 hours.