

For Research Use Only

# SERPINA6/CBG Polyclonal antibody

Catalog Number: 29931-1-AP



## Basic Information

### Catalog Number:

29931-1-AP

### Concentration:

600 ug/ml

### Source:

Rabbit

### Isotype:

IgG

### Immunogen Catalog Number:

AG31861

### GenBank Accession Number:

BC058021

### GeneID (NCBI):

866

### UNIPROT ID:

P08185

### Full Name:

serpin peptidase inhibitor, clade A  
(alpha-1 antiproteinase, antitrypsin),  
member 6

### Calculated MW:

405 aa, 45 kDa

### Observed MW:

45-55 kDa

### Purification Method:

Antigen affinity purification

### Recommended Dilutions:

WB: 1:1000-1:6000

IP: 0.5-4.0 ug for 1.0-3.0 mg of total  
protein lysate

IHC: 1:50-1:500

## Applications

### Tested Applications:

WB, IHC, IP, ELISA

### Species Specificity:

human

**Note-IHC: suggested antigen retrieval with  
TE buffer pH 9.0; (\*) Alternatively, antigen  
retrieval may be performed with citrate  
buffer pH 6.0**

### Positive Controls:

WB : human plasma,

IP : human placenta tissue,

IHC : human kidney tissue,

## Background Information

SERPINA6, also known as corticosteroid-binding globulin or CBG, belongs to the serpin family of serine protease inhibitors, and is mainly secreted by the liver. It is an alpha-globulin protein with corticosteroid-binding properties, and involved in obesity and stress sensitivity. It is also the major transport protein for glucocorticoids and progestins in the blood of most vertebrates. Defects in SERPINA6 are a cause of corticosteroid-binding globulin deficiency (CBG deficiency).

## Storage

### Storage:

Store at -20°C. Stable for one year after shipment.

### Storage Buffer:

PBS with 0.02% sodium azide and 50% glycerol, pH7.3

Aliquoting is unnecessary for -20°C storage

For technical support and original validation data for this product please contact:

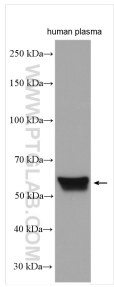
T: 4006900926

E: [Proteintech-CN@ptglab.com](mailto:Proteintech-CN@ptglab.com)

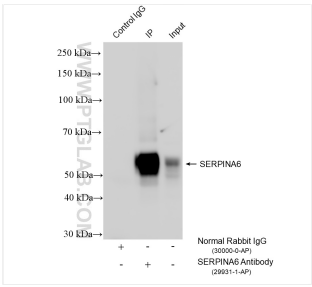
W: [ptgcn.com](http://ptgcn.com)

**This product is exclusively available under Proteintech Group brand and is not available to purchase from any other manufacturer.**

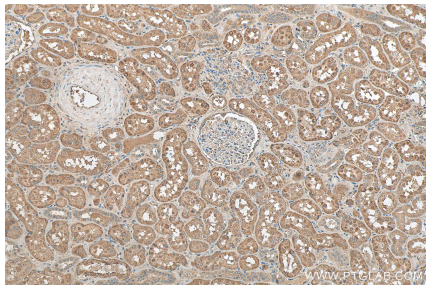
Selected Validation Data



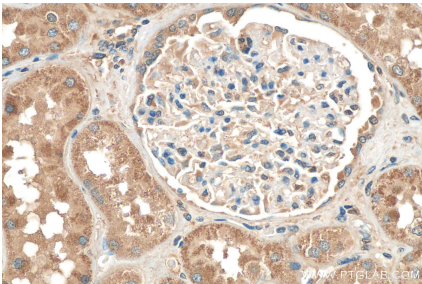
human plasma were subjected to SDS PAGE followed by western blot with 29931-1-AP (CBG/ Corticosteroid binding globulin antibody) at dilution of 1:3000 incubated at room temperature for 1.5 hours.



IP result of anti-SERPINA6/CBG (IP:29931-1-AP, 4ug; Detection:29931-1-AP 1:1000) with human placenta tissue lysate 960 ug.



Immunohistochemical analysis of paraffin-embedded human kidney tissue slide using 29931-1-AP (Corticosteroid binding globulin antibody) at dilution of 1:200 (under 10x lens). Heat mediated antigen retrieval with Tris-EDTA buffer (pH 9.0).



Immunohistochemical analysis of paraffin-embedded human kidney tissue slide using 29931-1-AP (Corticosteroid binding globulin antibody) at dilution of 1:200 (under 40x lens). Heat mediated antigen retrieval with Tris-EDTA buffer (pH 9.0).