

SPATS2L Polyclonal antibody

Catalog Number: 29930-1-AP

Basic Information

Catalog Number: 29930-1-AP	GenBank Accession Number: BC018736	Purification Method: Antigen affinity purification
Size: 600 µg/ml	GeneID (NCBI): 26010	Recommended Dilutions: WB 1:1000-1:4000
Source: Rabbit	UNIPROT ID: Q9NUQ6	IHC 1:50-1:500
Isotype: IgG	Full Name: viral DNA polymerase-transactivated protein 6	IF/ICC 1:50-1:500
Immunogen Catalog Number: AG31157	Calculated MW: 488 aa, 54 kDa	
	Observed MW: 54-65 kDa	

Applications

Tested Applications: IF/ICC, IHC, WB, ELISA	Positive Controls:
Species Specificity: Human, mouse, rat	WB : A549 cells, HepG2 cells, mouse kidney tissue, rat kidney tissue
Note-IHC: suggested antigen retrieval with TE buffer pH 9.0; (*) Alternatively, antigen retrieval may be performed with citrate buffer pH 6.0	IHC : human lung cancer tissue, human placenta tissue
	IF/ICC : HepG2 cells,

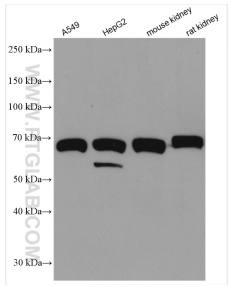
Background Information

SPATS2L encodes spermatogenesis associated and serine-rich 2-like protein, also named DNAPT6 (DNA polymerase transactivated protein 6) in human (PMID:11230166). SPATS2L acts as an important regulator of β 2-adrenergic receptor down-regulation (PubMed: 25562107). MiR-1269a down-regulates the expression of SPATS2L and LRP6, thereby inhibiting the proliferation of liver cancer cells (PMID: 28081866, PMID:35252180). SPATS2L has several isoforms by alternative splicing.

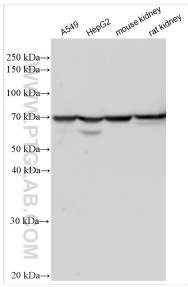
Storage

Storage:
Store at -20°C. Stable for one year after shipment.
Storage Buffer:
PBS with 0.02% sodium azide and 50% glycerol pH 7.3.
Aliquoting is unnecessary for -20°C storage

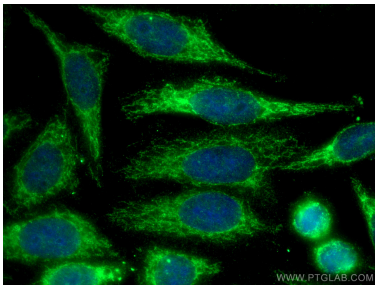
Selected Validation Data



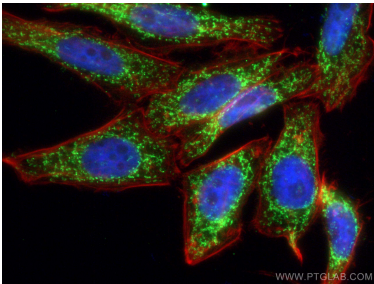
Various lysates were subjected to SDS PAGE followed by western blot with 29930-1-AP (SPATS2L antibody) at dilution of 1:2000 incubated at room temperature for 1.5 hours.



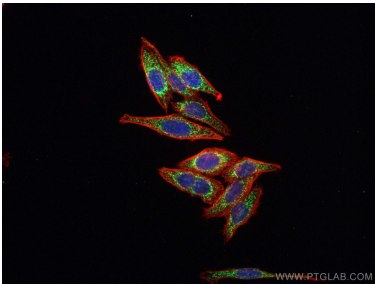
Various lysates were subjected to SDS PAGE followed by western blot with 29930-1-AP (SPATS2L antibody) at dilution of 1:15000 incubated at room temperature for 1.5 hours.



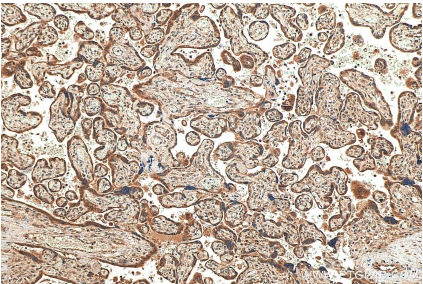
Immunofluorescent analysis of (-20°C Ethanol) fixed HepG2 cells using SPATS2L antibody (29930-1-AP) at dilution of 1:200 and CoraLite®488-Conjugated AffiniPure Goat Anti-Rabbit IgG(H+L).



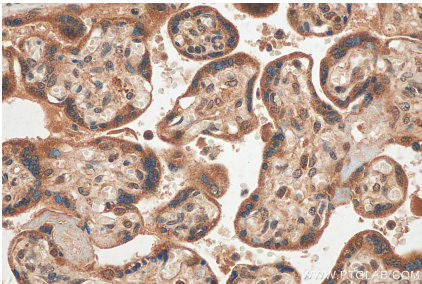
Immunofluorescent analysis of (4% PFA) fixed HepG2 cells using SPATS2L antibody (29930-1-AP) at dilution of 1:200 and CoraLite®488-Conjugated AffiniPure Goat Anti-Rabbit IgG(H+L), CL594-Phalloidin (red).



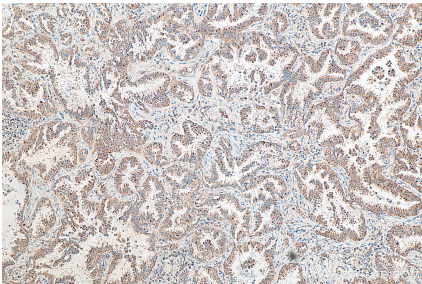
Immunofluorescent analysis of (4% PFA) fixed HepG2 cells using SPATS2L antibody (29930-1-AP) at dilution of 1:200 and CoraLite®488-Conjugated AffiniPure Goat Anti-Rabbit IgG(H+L), CL594-Phalloidin (red).



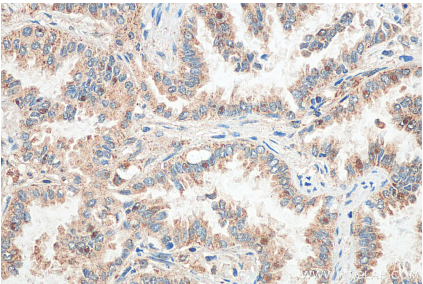
Immunohistochemical analysis of paraffin-embedded human placenta tissue slide using 29930-1-AP (SPATS2L antibody) at dilution of 1:200 (under 10x lens). Heat mediated antigen retrieval with Tris-EDTA buffer (pH 9.0).



Immunohistochemical analysis of paraffin-embedded human placenta tissue slide using 29930-1-AP (SPATS2L antibody) at dilution of 1:200 (under 40x lens). Heat mediated antigen retrieval with Tris-EDTA buffer (pH 9.0).



Immunohistochemical analysis of paraffin-embedded human lung cancer tissue slide using 29930-1-AP (SPATS2L antibody) at dilution of 1:200 (under 10x lens). Heat mediated antigen retrieval with Tris-EDTA buffer (pH 9.0).



Immunohistochemical analysis of paraffin-embedded human lung cancer tissue slide using 29930-1-AP (SPATS2L antibody) at dilution of 1:200 (under 40x lens). Heat mediated antigen retrieval with Tris-EDTA buffer (pH 9.0).