

For Research Use Only

# TPH1 Polyclonal antibody, PBS Only

Catalog Number: 29904-1-PBS



## Basic Information

|   |   |  |
|---|---|--|
| <b>Catalog Number:</b><br>29904-1-PBS       | <b>GenBank Accession Number:</b><br>BC106739  | <b>Purification Method:</b><br>Antigen affinity purification |
| <b>Source:</b><br>Rabbit                    | <b>GeneID (NCBI):</b><br>7166                 |  |
| <b>Isotype:</b><br>IgG                      | <b>UNIPROT ID:</b><br>P17752                  |  |
| <b>Immunogen Catalog Number:</b><br>AG31623 | <b>Full Name:</b><br>tryptophan hydroxylase 1 |  |
|   | <b>Calculated MW:</b><br>466 aa, 53 kDa       |  |
|   | <b>Observed MW:</b><br>51 kDa                 |  |

## Applications

**Tested Applications:**  
WB, IHC, Indirect ELISA

**Species Specificity:**  
human, mouse

## Background Information

Tryptophan hydroxylase 1 (TPH1) is the rate-limiting enzyme in the synthesis of serotonin (5-HT) from the amino acid tryptophan. It is primarily found in peripheral tissues such as the gut, pineal gland, and spleen. TPH1 plays a crucial role in regulating peripheral serotonin levels, which are involved in various physiological processes including gastrointestinal motility and cardiovascular function. Additionally, TPH1 has been implicated in the regulation of blood glucose levels and is associated with conditions such as fatty liver disease. (PMID: 32590025, PMID: 36331742, PMID: 37652099)

## Storage

**Storage:**  
Store at -80°C.  
**The product is shipped with ice packs. Upon receipt, store it immediately at -80°C**

**Storage Buffer:**  
PBS only, pH7.3

For technical support and original validation data for this product please contact:

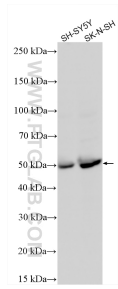
T: 4006900926

E: [Proteintech-CN@ptglab.com](mailto:Proteintech-CN@ptglab.com)

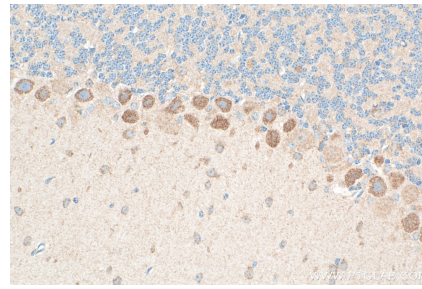
W: [ptgcn.com](http://ptgcn.com)

**This product is exclusively available under Proteintech Group brand and is not available to purchase from any other manufacturer.**

## Selected Validation Data



Various lysates were subjected to SDS PAGE followed by western blot with 29904-1-AP (TPH1 antibody) at dilution of 1:600 incubated at room temperature for 1.5 hours. This data was developed using the same antibody clone with 29904-1-PBS in a different storage buffer formulation.



Immunohistochemical analysis of paraffin-embedded mouse cerebellum tissue slide using 29904-1-AP (TPH1 antibody) at dilution of 1:200 (under 40x lens). Heat mediated antigen retrieval with Tris-EDTA buffer (pH 9.0). This data was developed using the same antibody clone with 29904-1-PBS in a different storage buffer formulation.