

For Research Use Only

PFKFB4 Polyclonal antibody, PBS Only

Catalog Number:29902-1-PBS



Basic Information

Catalog Number: 29902-1-PBS	GenBank Accession Number: NM_001317134	Purification Method: Antigen affinity purification
Concentration: 1 mg/ml	GeneID (NCBI): 5210	
Source: Rabbit	UNIPROT ID: Q16877	
Isotype: IgG	Full Name: 6-phosphofructo-2-kinase/fructose-2,6-bisphosphatase 4	
Immunogen Catalog Number: AG30571	Calculated MW: 54 kDa	
	Observed MW: 54 kDa	

Applications

Tested Applications:
WB, IHC, IF/ICC, Indirect ELISA

Species Specificity:
human, mouse

Background Information

PFKFB4 (6-phosphofructo-2-kinase/fructose-2,6-bisphosphatase 4), is a bi-function enzyme. On one hand, PFKFB4 synthesizes fructose 2,6-bisphosphate (F2,6-BP) to stimulate glycolysis, playing important roles in metabolic processes. On the other hand, PFKFB4 acts as a phosphatase to hydrolyze F2,6-BP into fructose-6-phosphate (F6P) and inorganic phosphate (Pi), functioning as a protein kinase to phosphorylate protein substrates. The dual function of PFKFB4 makes it involved in multiple biological processes such as cell cycle regulation, cell proliferation and transcriptional regulation(PMID: 33593309). PFKFB4 has been reported to be involved in a variety of cancers including human bladder cancer, gastric cancer, colon cancer, breast cancer and other malignant tumors(PMID: 21396842, PMID: 33732372, PMID: 31244553).

Storage

Storage:
Store at -80°C.
The product is shipped with ice packs. Upon receipt, store it immediately at -80°C

Storage Buffer:
PBS only, pH7.3

For technical support and original validation data for this product please contact:

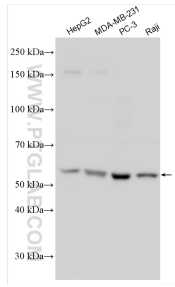
T: 4006900926

E: Proteintech-CN@ptglab.com

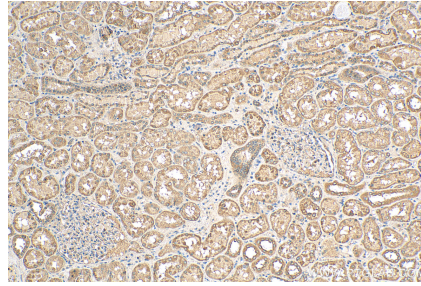
W: ptgcn.com

This product is exclusively available under Proteintech Group brand and is not available to purchase from any other manufacturer.

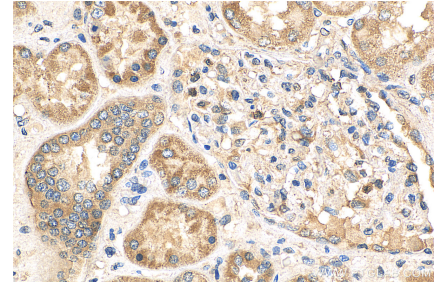
Selected Validation Data



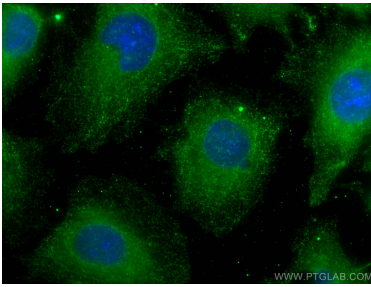
Various lysates were subjected to SDS PAGE followed by western blot with 29902-1-AP (PFKFB4 antibody) at dilution of 1:2000 incubated at room temperature for 1.5 hours. This data was developed using the same antibody clone with 29902-1-PBS in a different storage buffer formulation.



Immunohistochemical analysis of paraffin-embedded human kidney tissue slide using 29902-1-AP (PFKFB4 antibody) at dilution of 1:200 (under 10x lens). Heat mediated antigen retrieval with Tris-EDTA buffer (pH 9.0). This data was developed using the same antibody clone with 29902-1-PBS in a different storage buffer formulation.



Immunohistochemical analysis of paraffin-embedded human kidney tissue slide using 29902-1-AP (PFKFB4 antibody) at dilution of 1:200 (under 40x lens). Heat mediated antigen retrieval with Tris-EDTA buffer (pH 9.0). This data was developed using the same antibody clone with 29902-1-PBS in a different storage buffer formulation.



Immunofluorescent analysis of (-20°C Methanol) fixed HUVEC cells using PFKFB4 antibody (29902-1-AP) at dilution of 1:400 and CoraLite@488-Conjugated AffiniPure Goat Anti-Rabbit IgG(H+L). This data was developed using the same antibody clone with 29902-1-PBS in a different storage buffer formulation.