

For Research Use Only

# RELL1 Polyclonal antibody

Catalog Number: 29823-1-AP

1 Publications



## Basic Information

<b>Catalog Number:</b> 29823-1-AP	<b>GenBank Accession Number:</b> BC039540	<b>Purification Method:</b> Antigen affinity purification
<b>Concentration:</b> 900 µg/ml	<b>GeneID (NCBI):</b> 768211	<b>Recommended Dilutions:</b> WB 1:1000-1:6000 IHC 1:50-1:500
<b>Source:</b> Rabbit	<b>UNIPROT ID:</b> Q8IUW5	
<b>Isotype:</b> IgG	<b>Full Name:</b> RELT-like 1	
<b>Immunogen Catalog Number:</b> AG31475	<b>Observed MW:</b> 29 kDa	

## Applications

<b>Tested Applications:</b> WB, IHC, ELISA	<b>Positive Controls:</b> WB : MCF-7 cells, IHC : rat skin tissue,
<b>Cited Applications:</b> WB	
<b>Species Specificity:</b> Human, Rat	
<b>Cited Species:</b> human	

**Note-IHC: suggested antigen retrieval with TE buffer pH 9.0; (\*) Alternatively, antigen retrieval may be performed with citrate buffer pH 6.0**

## Background Information

RELT-like protein 1 (RELL1) is a member of the tumor necrosis factor (TNF) receptor family and belongs to the receptor expressed in the lymphoid tissues (RELT) family. RELT1 activates the pro-inflammatory pathway by binding to TNF receptor-related factor 1 (TRAF1). Further, RELT family members activate p38 and induce apoptosis by a mechanism distinct from that of TNF receptors (PMID: 32090861). The molecular weight of RELT1 is 29 kDa.

## Notable Publications

Author	Pubmed ID	Journal	Application
Aakriti Jain	39713462	bioRxiv	WB

## Storage

**Storage:**  
Store at -20°C. Stable for one year after shipment.  
**Storage Buffer:**  
PBS with 0.02% sodium azide and 50% glycerol pH 7.3.  
Aliquoting is unnecessary for -20°C storage

For technical support and original validation data for this product please contact:

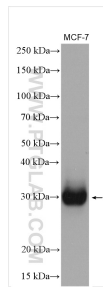
T: 4006900926

E: [Proteintech-CN@ptglab.com](mailto:Proteintech-CN@ptglab.com)

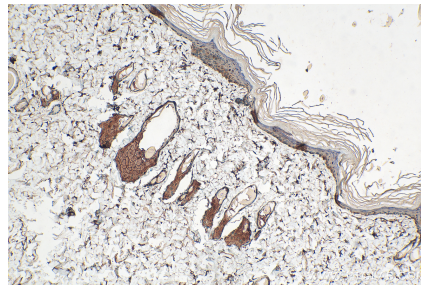
W: [ptgcn.com](http://ptgcn.com)

This product is exclusively available under Proteintech Group brand and is not available to purchase from any other manufacturer.

## Selected Validation Data



MCF-7 cells were subjected to SDS PAGE followed by western blot with 29823-1-AP (RELL1 antibody) at dilution of 1:3000 incubated at room temperature for 1.5 hours.



Immunohistochemical analysis of paraffin-embedded rat skin tissue slide using 29823-1-AP (RELL1 antibody) at dilution of 1:200 (under 10x lens). Heat mediated antigen retrieval with Tris-EDTA buffer (pH 9.0).