

For Research Use Only

SEL1L Polyclonal antibody, PBS Only

Catalog Number: 29801-1-PBS



Basic Information

| | | |
|---|---|--|
| Catalog Number: 29801-1-PBS | GenBank Accession Number: NM_005065 | Purification Method: Antigen affinity purification |
| Concentration: 1 mg/ml | GeneID (NCBI): 6400 | |
| Source: Rabbit | UNIPROT ID: Q9UBV2 | |
| Isotype: IgG | Full Name: sel-1 suppressor of lin-12-like (C. elegans) | |
| Immunogen Catalog Number: AG32178 | Calculated MW: 89 kDa | |
| | Observed MW: 89 kDa | |

Applications

Tested Applications:
WB, IHC, Indirect ELISA

Species Specificity:
human, mouse, rat

Background Information

SEL1L (Suppressor Enhancer Lin-12 Like) is an endoplasmic reticulum-resident transmembrane protein that plays a critical role in collagen metabolism. It has been identified as an intracellular rheostat controlling collagen turnover, which is the balance between collagen synthesis and degradation. The protein's luminal face contains a Fibronectin-2 (FN2) domain, which is known to bind collagen. SEL1L functions as a sensor of collagen biosynthesis and is necessary for the upregulation of MRC2 (mannose receptor, C-type 2), a collagen endocytic receptor that mediates the clearance of collagen.

Storage

Storage:
Store at -80°C.
The product is shipped with ice packs. Upon receipt, store it immediately at -80°C

Storage Buffer:
PBS only

For technical support and original validation data for this product please contact:

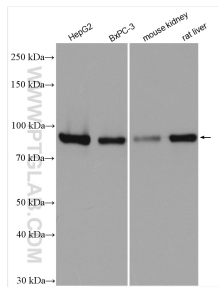
T: 4006900926

E: Proteintech-CN@ptglab.com

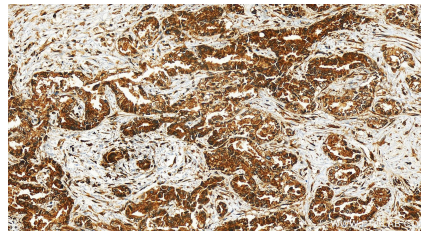
W: ptgcn.com

This product is exclusively available under Proteintech Group brand and is not available to purchase from any other manufacturer.

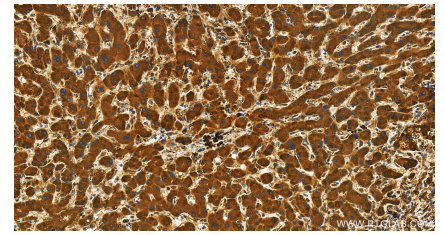
Selected Validation Data



Various lysates were subjected to SDS PAGE followed by western blot with 29801-1-AP (SEL1L antibody) at dilution of 1:4000 incubated at room temperature for 1.5 hours. This data was developed using the same antibody clone with 29801-1-PBS in a different storage buffer formulation.



Immunohistochemical analysis of paraffin-embedded human intrahepatic cholangiocarcinoma tissue slide using 29801-1-AP (SEL1L antibody) at dilution of 1:200 (under 20x lens). Heat mediated antigen retrieval with Tris-EDTA buffer (pH 9.0). This data was developed using the same antibody clone with 29801-1-PBS in a different storage buffer formulation.



Immunohistochemical analysis of paraffin-embedded human intrahepatic cholangiocarcinoma tissue slide using 29801-1-AP (SEL1L antibody) at dilution of 1:200 (under 20x lens). Heat mediated antigen retrieval with Tris-EDTA buffer (pH 9.0). This data was developed using the same antibody clone with 29801-1-PBS in a different storage buffer formulation.