

SEL1L Polyclonal antibody

Catalog Number: 29801-1-AP

Basic Information

Catalog Number:

29801-1-AP

Concentration:

600 ug/ml

Source:

Rabbit

Isotype:

IgG

Immunogen Catalog Number:

AG32178

GenBank Accession Number:

NM_005065

GeneID (NCBI):

6400

UNIPROT ID:

Q9UBV2

Full Name:

sel-1 suppressor of lin-12-like (C. elegans)

Calculated MW:

89 kDa

Observed MW:

89 kDa

Purification Method:

Antigen affinity purification

Recommended Dilutions:

WB 1:1000-1:8000

IHC 1:50-1:500

Applications

Tested Applications:

WB, IHC, ELISA

Species Specificity:

human, mouse, rat

Note-IHC: suggested antigen retrieval with TE buffer pH 9.0; (*) Alternatively, antigen retrieval may be performed with citrate buffer pH 6.0

Positive Controls:

WB : HepG2 cells, BxPC-3 cells, HEK-293T cells, mouse kidney tissue, rat liver tissue

IHC : human intrahepatic cholangiocarcinoma tissue, human ovary cancer tissue

Background Information

SEL1L (Suppressor Enhancer Lin-12 Like) is an endoplasmic reticulum-resident transmembrane protein that plays a critical role in collagen metabolism. It has been identified as an intracellular rheostat controlling collagen turnover, which is the balance between collagen synthesis and degradation. The protein's luminal face contains a Fibronectin-2 (FN2) domain, which is known to bind collagen. SEL1L functions as a sensor of collagen biosynthesis and is necessary for the upregulation of MRC2 (mannose receptor, C-type 2), a collagen endocytic receptor that mediates the clearance of collagen.

Storage

Storage:

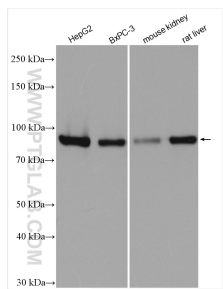
Store at -20°C. Stable for one year after shipment.

Storage Buffer:

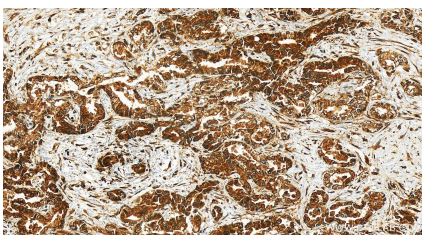
PBS with 0.02% sodium azide and 50% glycerol

Aliquoting is unnecessary for -20°C storage

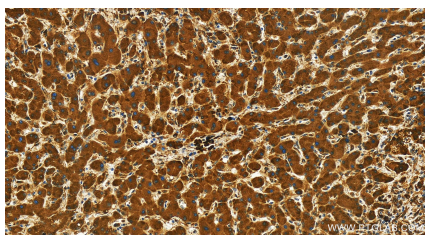
Selected Validation Data



Various lysates were subjected to SDS PAGE followed by western blot with 29801-1-AP (SEL1L antibody) at dilution of 1:4000 incubated at room temperature for 1.5 hours.



Immunohistochemical analysis of paraffin-embedded human intrahepatic cholangiocarcinoma tissue slide using 29801-1-AP (SEL1L antibody) at dilution of 1:200 (under 20x lens). Heat mediated antigen retrieval with Tris-EDTA buffer (pH 9.0).



Immunohistochemical analysis of paraffin-embedded human intrahepatic cholangiocarcinoma tissue slide using 29801-1-AP (SEL1L antibody) at dilution of 1:200 (under 20x lens). Heat mediated antigen retrieval with Tris-EDTA buffer (pH 9.0).