

For Research Use Only

EBP50/NHERF-1 Polyclonal antibody

Catalog Number: 29771-1-AP



Basic Information

Catalog Number:

29771-1-AP

Size:

600 ug/ml

Source:

Rabbit

Isotype:

IgG

Immunogen Catalog Number:

AG30878

GenBank Accession Number:

NM_004252

GeneID (NCBI):

9368

UNIPROT ID:

O14745

Full Name:

solute carrier family 9
(sodium/hydrogen exchanger),
member 3 regulator 1

Calculated MW:

39 kDa

Observed MW:

50 kDa

Purification Method:

Antigen affinity purification

Recommended Dilutions:

WB 1:5000-1:50000

IHC 1:1000-1:4000

IF/ICC 1:200-1:800

Applications

Tested Applications:

WB, IHC, IF/ICC, FC (Intra), ELISA

Species Specificity:

human, mouse, rat

**Note-IHC: suggested antigen retrieval with
TE buffer pH 9.0; (*) Alternatively, antigen
retrieval may be performed with citrate
buffer pH 6.0**

Positive Controls:

WB : HCT 116 cells, HepG2 cells, MCF-7 cells, MDA-MB-
231 cells, rat kidney tissue, mouse kidney tissue

IHC : human placenta tissue, rat kidney tissue

IF/ICC : HeLa cells, A549 cells

Background Information

Na⁺/H⁺ exchanger regulatory factor 1 (NHERF-1, also known as EBP50 ezrin-binding protein of 50 kDa, SLCA9A3R1) is a phosphoprotein that assembles multiprotein complexes via two PDZ domains and a C-terminal ezrin-binding domain. NHERF-1 was initially recognized as a scaffolding protein that recruits membrane transporters/receptors and cytoplasmic signaling proteins into functional complexes localized at or near the plasma membrane in epithelial cells (PMID: 19308292).

Storage

Storage:

Store at -20°C. Stable for one year after shipment.

Storage Buffer:

PBS with 0.02% sodium azide and 50% glycerol pH 7.3.

Aliquoting is unnecessary for -20°C storage

For technical support and original validation data for this product please contact:

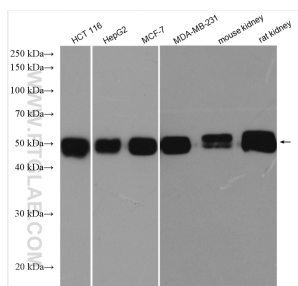
T: 4006900926

E: Proteintech-CN@ptglab.com

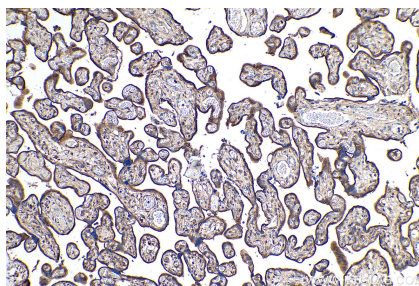
W: ptgcn.com

This product is exclusively available under Proteintech Group brand and is not available to purchase from any other manufacturer.

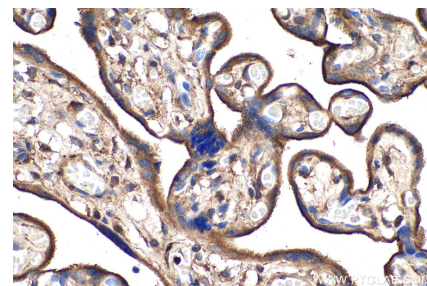
Selected Validation Data



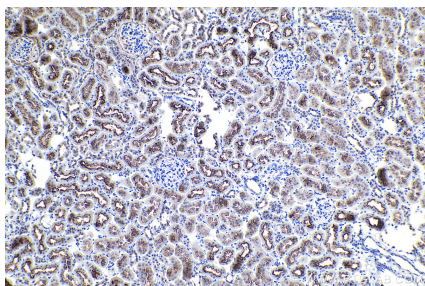
Various lysates were subjected to SDS PAGE followed by western blot with 29771-1-AP (EBP50/NHERF-1 antibody) at dilution of 1:10000 and incubated at room temperature for 1.5 hours.



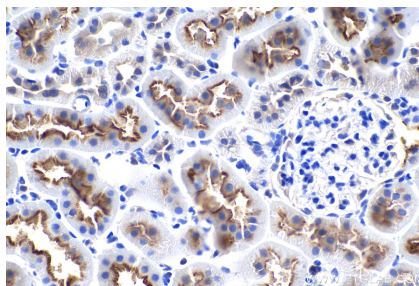
Immunohistochemical analysis of paraffin-embedded human placenta tissue slide using 29771-1-AP (EBP50/NHERF-1 antibody) at dilution of 1:2000 (under 10x lens). Heat mediated antigen retrieval with Tris-EDTA buffer (pH 9.0).



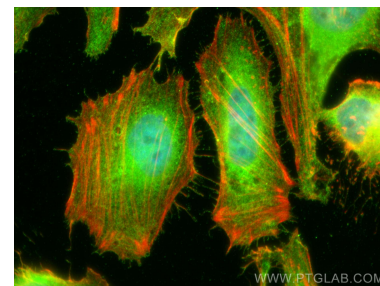
Immunohistochemical analysis of paraffin-embedded human placenta tissue slide using 29771-1-AP (EBP50/NHERF-1 antibody) at dilution of 1:2000 (under 40x lens). Heat mediated antigen retrieval with Tris-EDTA buffer (pH 9.0).



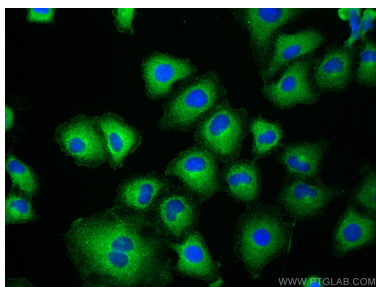
Immunohistochemical analysis of paraffin-embedded rat kidney tissue slide using 29771-1-AP (EBP50/NHERF-1 antibody) at dilution of 1:2000 (under 10x lens). Heat mediated antigen retrieval with Tris-EDTA buffer (pH 9.0).



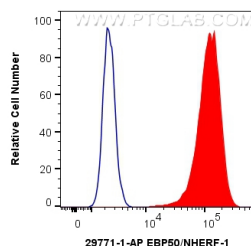
Immunohistochemical analysis of paraffin-embedded rat kidney tissue slide using 29771-1-AP (EBP50/NHERF-1 antibody) at dilution of 1:2000 (under 40x lens). Heat mediated antigen retrieval with Tris-EDTA buffer (pH 9.0).



Immunofluorescent analysis of (4% PFA) fixed HeLa cells using EBP50/NHERF-1 antibody (29771-1-AP) at dilution of 1:400 and CoraLite®488-Conjugated AffiniPure Goat Anti-Rabbit IgG(H+L), CL594-phalloidin (red).



Immunofluorescent analysis of (-20°C Methanol) fixed A549 cells using EBP50/NHERF-1 antibody (29771-1-AP) at dilution of 1:600 and Multi-rAb CoraLite® Plus 488-Goat Anti-Rabbit Recombinant Secondary Antibody (H+L) (RGAR002).



1X10⁶ HepG2 cells were intracellularly stained with 0.4 ug Anti-HUMAN EBP50/NHERF-1 (29771-1-AP) and CoraLite®488-Conjugated AffiniPure Goat Anti-Rabbit IgG(H+L) at dilution 1:1000 (red), or 0.4 ug Control Antibody. Cells were fixed with 4% PFA and permeabilized with Flow Cytometry Perm Buffer (PF00011-C).