

For Research Use Only

NHE1 Polyclonal antibody

Catalog Number: 29761-1-AP



Basic Information

Catalog Number:

29761-1-AP

Size:

700 ug/ml

Source:

Rabbit

Isotype:

IgG

Immunogen Catalog Number:

AG31192

GenBank Accession Number:

NM_003047

GeneID (NCBI):

6548

UNIPROT ID:

P19634

Full Name:

solute carrier family 9
(sodium/hydrogen exchanger),
member 1

Calculated MW:

91 kDa

Observed MW:

90-100 kDa

Purification Method:

Antigen affinity purification

Recommended Dilutions:

WB 1:1000-1:4000

IHC 1:50-1:500

IF/ICC 1:200-1:800

Applications

Tested Applications:

WB, IHC, IF/ICC, ELISA

Species Specificity:

human, mouse, rat

**Note-IHC: suggested antigen retrieval with
TE buffer pH 9.0; (*) Alternatively, antigen
retrieval may be performed with citrate
buffer pH 6.0**

Positive Controls:

WB : mouse brain tissue, mouse heart tissue, rat brain
tissue, rat heart tissue

IHC : human stomach tissue,

IF/ICC : HeLa cells,

Background Information

NHE1, also named as SLC9A1, encodes an Na⁺/H⁺ antiporter that is a membrane-bound enzyme involved in regulating pH of vertebrate cells. NHE1 regulates a number of cell behaviors, including adhesion, shape determination, migration, and proliferation (PMID:11807182). It is inhibited by the non-specific diuretic drug amiloride and activated by growth factors, mitogens, neurotransmitters, tumor promoters, and others (PMID: 2846238). NHE1 is expressed in heart where it contributes to cardiomyocyte pH homeostasis (PMID: 12832126, PMID: 23709596).

Storage

Storage:

Store at -20°C. Stable for one year after shipment.

Storage Buffer:

PBS with 0.02% sodium azide and 50% glycerol pH 7.3.

Aliquoting is unnecessary for -20°C storage

For technical support and original validation data for this product please contact:

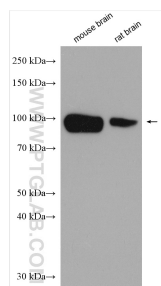
T: 4006900926

E: Proteintech-CN@ptglab.com

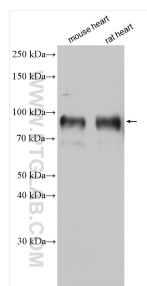
W: ptgcn.com

This product is exclusively available under Proteintech Group brand and is not available to purchase from any other manufacturer.

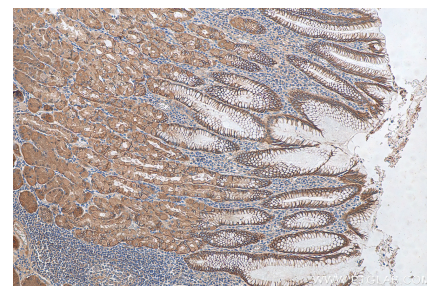
Selected Validation Data



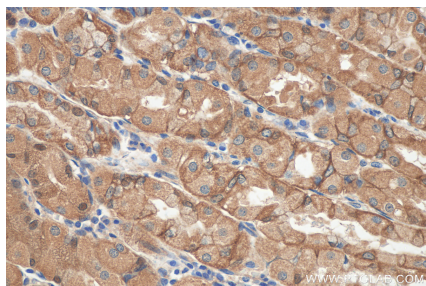
Various lysates were subjected to SDS PAGE followed by western blot with 29761-1-AP (NHE1 antibody) at dilution of 1:2000 incubated at room temperature for 1.5 hours.



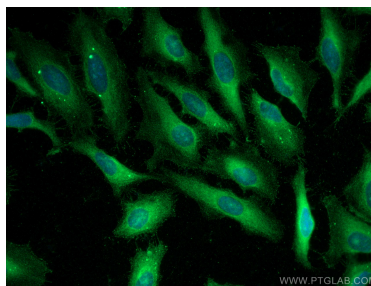
Various lysates were subjected to SDS PAGE followed by western blot with 29761-1-AP (NHE1 antibody) at dilution of 1:1000 incubated at room temperature for 1.5 hours.



Immunohistochemical analysis of paraffin-embedded human stomach tissue slide using 29761-1-AP (NHE1 antibody) at dilution of 1:200 (under 10x lens).



Immunohistochemical analysis of paraffin-embedded human stomach tissue slide using 29761-1-AP (NHE1 antibody) at dilution of 1:200 (under 40x lens).



Immunofluorescent analysis of (-20°C Methanol) fixed HeLa cells using NHE1 antibody (29761-1-AP) at dilution of 1:400 and CoraLite®488-Conjugated AffiniPure Goat Anti-Rabbit IgG(H+L).