

For Research Use Only

SHH Polyclonal antibody

Catalog Number: 29752-1-AP



Basic Information

Catalog Number:

29752-1-AP

Concentration:

500 µg/ml

Source:

Rabbit

Isotype:

IgG

Immunogen Catalog Number:

AG31338

GenBank Accession Number:

NM_000193

GeneID (NCBI):

6469

UNIPROT ID:

Q15465

Full Name:

sonic hedgehog homolog (Drosophila)

Calculated MW:

50 kDa

Observed MW:

50-60 kDa

Purification Method:

Antigen affinity purification

Recommended Dilutions:

WB: 1:500-1:3000

IHC: 1:50-1:500

FC (Intra): 0.40 µg per 10⁶ cells in a 100 µl suspension

Applications

Tested Applications:

WB, IHC, FC (Intra), ELISA

Species Specificity:

human, mouse, rat

Note-IHC: suggested antigen retrieval with TE buffer pH 9.0; (*) Alternatively, antigen retrieval may be performed with citrate buffer pH 6.0

Positive Controls:

WB: HeLa cells, HepG2 cells, MCF-7 cells, MDA-MB-231 cells, mouse liver tissue, rat liver tissue

IHC: mouse embryo tissue,

FC (Intra): HeLa cells,

Background Information

SHH, Sonic hedgehog protein, binds to the patched (PTCH1) receptor, which functions in association with smoothened (SMO), to activate the transcription of target genes (PMID: 10753901). In the absence of SHH, PTCH1 represses the constitutive signaling activity of SMO (PMID: 10753901). SHH is synthesized as a 45 kDa precursor that undergoes an autocatalytic processing event that produces a 19 kDa N-terminal product, responsible for all signaling activities, and a 25 kDa C-terminal fragment (PMID: 10753901, PMID: 16282375).

Storage

Storage:

Store at -20°C. Stable for one year after shipment.

Storage Buffer:

PBS with 0.02% sodium azide and 50% glycerol, pH7.3

Aliquoting is unnecessary for -20°C storage

For technical support and original validation data for this product please contact:

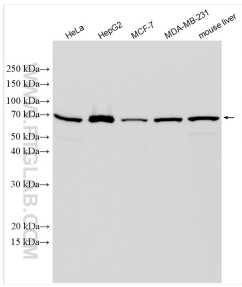
T: 4006900926

E: Proteintech-CN@ptglab.com

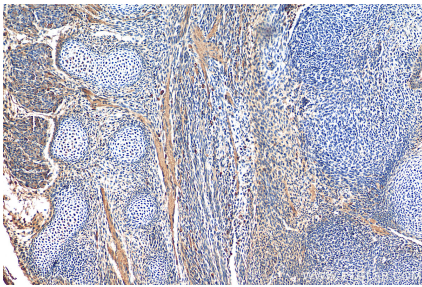
W: ptgcn.com

This product is exclusively available under Proteintech Group brand and is not available to purchase from any other manufacturer.

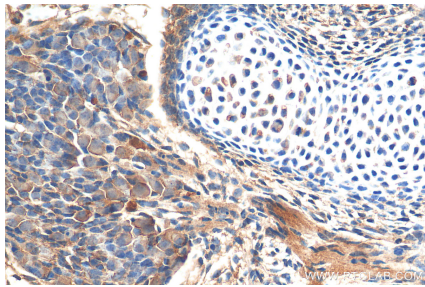
Selected Validation Data



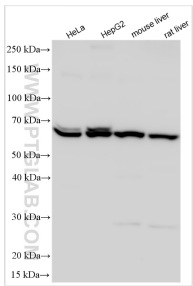
Various lysates were subjected to SDS PAGE followed by western blot with 29752-1-AP (SHH antibody) at dilution of 1:1500 incubated at room temperature for 1.5 hours.



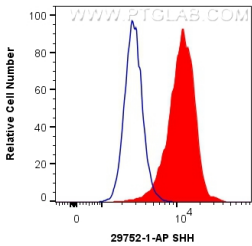
Immunohistochemical analysis of paraffin-embedded mouse embryo tissue slide using 29752-1-AP (SHH antibody) at dilution of 1:200 (under 10x lens). Heat mediated antigen retrieval with Tris-EDTA buffer (pH 9.0).



Immunohistochemical analysis of paraffin-embedded mouse embryo tissue slide using 29752-1-AP (SHH antibody) at dilution of 1:200 (under 40x lens). Heat mediated antigen retrieval with Tris-EDTA buffer (pH 9.0).



Various lysates were subjected to SDS PAGE followed by western blot with 29752-1-AP (SHH antibody) at dilution of 1:18000 incubated at room temperature for 1.5 hours.



1X10⁶ HeLa cells were intracellularly stained with 0.4 ug Anti-Human SHH (29752-1-AP) and Coralite®488-Conjugated Goat Anti-Rabbit IgG(H+L) at dilution 1:1000 (red), or 0.4 ug Control Antibody. Cells were fixed with 4% PFA and permeabilized with Flow Cytometry Perm Buffer (PF00011-C).