

For Research Use Only

# STUB1 Polyclonal antibody, PBS Only

Catalog Number: 29751-1-PBS

Featured Product



## Basic Information

Catalog Number:

29751-1-PBS

Concentration:

1 mg/ml

Source:

Rabbit

Isotype:

IgG

Immunogen Catalog Number:

AG31335

GenBank Accession Number:

BC007545

GeneID (NCBI):

10273

UNIPROT ID:

Q9UNE7

Full Name:

STIP1 homology and U-box containing protein 1

Observed MW:

35 kDa

Purification Method:

Antigen affinity purification

## Applications

Tested Applications:

WB, IHC, Indirect ELISA

Species Specificity:

human, mouse, rat

## Background Information

STUB1, also named as CHIP, SDCCAG7, UBBOX1 and NY-CO-7, is a E3 ubiquitin-protein ligase which targets misfolded chaperone substrates towards proteasomal degradation. STUB1/CHIP modulates the activity of several chaperone complexes, including Hsp70, Hsc70 and Hsp90. It mediates transfer of non-canonical short ubiquitin chains to HSPA8 that have no effect on HSPA8 degradation. STUB1/CHIP mediates polyubiquitination of CYP3A4. (PMID:10330192) CHIP/STUB1 strongly reduced keratin aggregates through increased degradation of mutant K14. (PMID:20151404) STUB1/CHIP regulates NAD(P)H:quinone oxidoreductase 1 (NQO1) accumulation in aged brain, a process impaired in certain Alzheimer patients. (PMID:21220432)

## Storage

Storage:

Store at -80°C.

The product is shipped with ice packs. Upon receipt, store it immediately at -80°C

Storage Buffer:

PBS only, pH7.3

For technical support and original validation data for this product please contact:

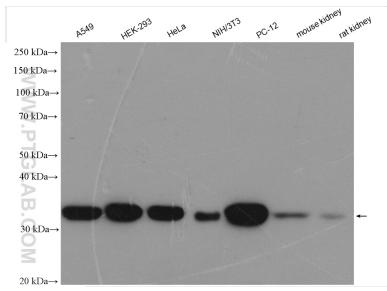
T: 4006900926

E: [Proteintech-CN@ptglab.com](mailto:Proteintech-CN@ptglab.com)

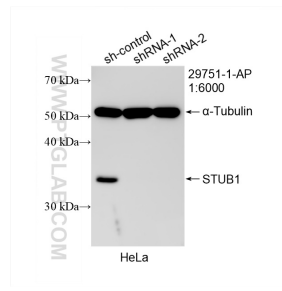
W: [ptgcn.com](http://ptgcn.com)

This product is exclusively available under Proteintech Group brand and is not available to purchase from any other manufacturer.

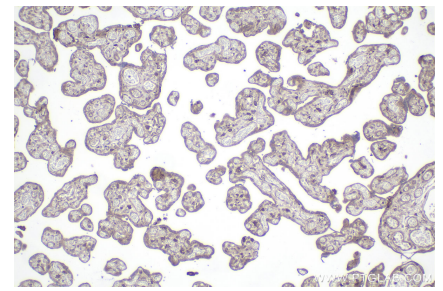
## Selected Validation Data



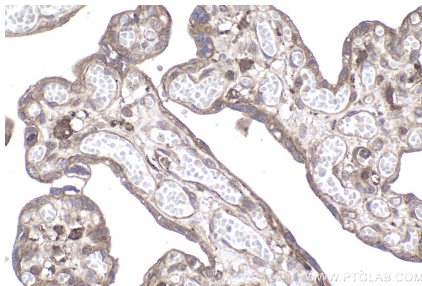
Various lysates were subjected to SDS PAGE followed by western blot with 29751-1-AP (STUB1 antibody) at dilution of 1:3000 incubated at room temperature for 1.5 hours. This data was developed using the same antibody clone with 29751-1-PBS in a different storage buffer formulation.



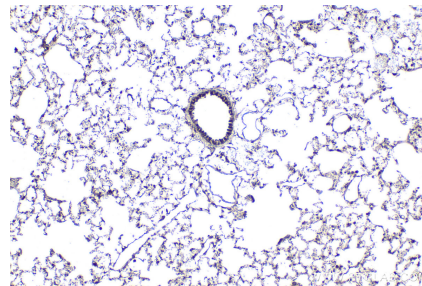
WB result of STUB1 antibody (29751-1-AP; 1:6000; incubated at room temperature for 1.5 hours) with sh-Control and sh-STUB1 transfected HeLa cells. This data was developed using the same antibody clone with 29751-1-PBS in a different storage buffer formulation.



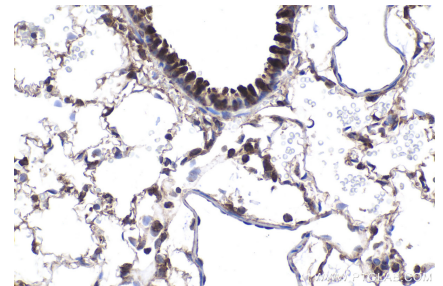
Immunohistochemical analysis of paraffin-embedded human placenta tissue slide using 29751-1-AP (STUB1 antibody) at dilution of 1:500 (under 10x lens). Heat mediated antigen retrieval with Tris-EDTA buffer (pH 9.0). This data was developed using the same antibody clone with 29751-1-PBS in a different storage buffer formulation.



Immunohistochemical analysis of paraffin-embedded human placenta tissue slide using 29751-1-AP (STUB1 antibody) at dilution of 1:500 (under 40x lens). Heat mediated antigen retrieval with Tris-EDTA buffer (pH 9.0). This data was developed using the same antibody clone with 29751-1-PBS in a different storage buffer formulation.



Immunohistochemical analysis of paraffin-embedded rat lung tissue slide using 29751-1-AP (STUB1 antibody) at dilution of 1:500 (under 10x lens). Heat mediated antigen retrieval with Tris-EDTA buffer (pH 9.0). This data was developed using the same antibody clone with 29751-1-PBS in a different storage buffer formulation.



Immunohistochemical analysis of paraffin-embedded rat lung tissue slide using 29751-1-AP (STUB1 antibody) at dilution of 1:500 (under 40x lens). Heat mediated antigen retrieval with Tris-EDTA buffer (pH 9.0). This data was developed using the same antibody clone with 29751-1-PBS in a different storage buffer formulation.