

# Cannabinoid receptor 1 Polyclonal antibody

Catalog Number: 29708-1-AP

Featured Product

1 Publications

## Basic Information

**Catalog Number:**

29708-1-AP

**Size:**

450 µg/ml

**Source:**

Rabbit

**Isotype:**

IgG

**Immunogen Catalog Number:**

AG31838

**GenBank Accession Number:**

BC074812

**GeneID (NCBI):**

1268

**UNIPROT ID:**

P21554

**Full Name:**

cannabinoid receptor 1 (brain)

**Calculated MW:**

472 aa, 53 kDa

**Observed MW:**

48 kDa, 66 kDa

**Purification Method:**

Antigen affinity purification

**Recommended Dilutions:**

WB 1:5000-1:50000

## Applications

**Tested Applications:**

WB, ELISA

**Cited Applications:**

WB

**Species Specificity:**

Human, Mouse, Rat

**Cited Species:**

mouse

**Positive Controls:**

WB : mouse brain tissue, SH-SY5Y cells, rat brain tissue

## Background Information

Cannabinoid receptor 1 (CNR1, or CB1) and CNR2 (CB2) are members of the guanine-nucleotide-binding protein (G-protein) coupled receptor family. The CB1 receptor is expressed mainly in the brain. The CB2 receptor is expressed mainly in the immune system and in hematopoietic cells. The two receptors have been found to be involved in the cannabinoid-induced CNS effects (including alterations in mood and cognition) experienced by users of marijuana.

## Notable Publications

Author	Pubmed ID	Journal	Application
Ming Li	37718490	ACS Chem Neurosci	WB

## Storage

**Storage:**

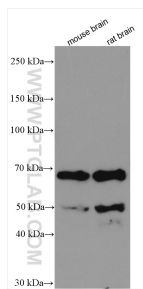
Store at -20°C. Stable for one year after shipment.

**Storage Buffer:**

PBS with 0.02% sodium azide and 50% glycerol pH 7.3.

Aliquoting is unnecessary for -20°C storage

## Selected Validation Data



Various lysates were subjected to SDS PAGE followed by western blot with 29708-1-AP (Cannabinoid receptor 1 antibody) at dilution of 1:10000 incubated at room temperature for 1.5 hours.