

For Research Use Only

# SYNPO Polyclonal antibody

Catalog Number: 29662-1-AP



## Basic Information

<b>Catalog Number:</b> 29662-1-AP	<b>GenBank Accession Number:</b> BC146665	<b>Purification Method:</b> Antigen affinity purification
<b>Size:</b> 230 µg/ml	<b>GeneID (NCBI):</b> 11346	<b>Recommended Dilutions:</b> WB 1:1000-1:6000 IF 1:200-1:800
<b>Source:</b> Rabbit	<b>UNIPROT ID:</b> Q8N3V7	
<b>Isotype:</b> IgG	<b>Full Name:</b> synaptopodin	
<b>Immunogen Catalog Number:</b> AG31287	<b>Calculated MW:</b> 929 aa, 99 kDa	
	<b>Observed MW:</b> 44 kDa, 74-100 kDa	

## Applications

<b>Tested Applications:</b> IF/ICC, WB, ELISA	<b>Positive Controls:</b> WB : mouse brain tissue, rat brain tissue IF : U2OS cells,
<b>Species Specificity:</b> Human, mouse, rat	

## Background Information

Synaptopodin is a actin-associated protein expressed in mature dendritic spines and renal podocytes. Several isoforms of synaptopodin have been reported: the 100 kDa neural form and 110 kDa renal form. 44-45 kDa may represent the degradation product of synaptopodin. As a podocyte specific protein, synaptopodin expression level was decreased in kidney but increased in the urinary podocytes from patients with preeclampsia, indicating that synaptopodin is a useful marker for preeclampsia. (15841212, 10555072)

## Storage

**Storage:**  
Store at -20°C. Stable for one year after shipment.  
**Storage Buffer:**  
PBS with 0.02% sodium azide and 50% glycerol pH 7.3.  
Aliquoting is unnecessary for -20°C storage

For technical support and original validation data for this product please contact:

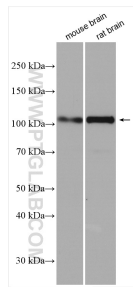
T: 4006900926

E: Proteintech-CN@ptglab.com

W: ptgcn.com

**This product is exclusively available under Proteintech Group brand and is not available to purchase from any other manufacturer.**

## Selected Validation Data



Various lysates were subjected to SDS PAGE followed by western blot with 29662-1-AP (SYNPO antibody) at dilution of 1:3000 incubated at room temperature for 1.5 hours.

Immunofluorescent analysis of (-20°C Methanol) fixed U2OS cells using SYNPO antibody (29662-1-AP) at dilution of 1:400 and CoraLite® 488-Conjugated AffiniPure Goat Anti-Rabbit IgG(H+L).

Immunofluorescent analysis of (-20°C Methanol) fixed U2OS cells using SYNPO antibody (29662-1-AP) at dilution of 1:400 and CoraLite® 488-Conjugated AffiniPure Goat Anti-Rabbit IgG(H+L).