

For Research Use Only

# OTUD3 Polyclonal antibody, PBS Only

Catalog Number: 29622-1-PBS

Featured Product



## Basic Information

Catalog Number:

29622-1-PBS

Source:

Rabbit

Isotype:

IgG

Immunogen Catalog Number:

AG30425

GenBank Accession Number:

NM\_015207

GeneID (NCBI):

23252

UNIPROT ID:

Q5T2D3

Full Name:

OTU domain containing 3

Calculated MW:

45 kDa

Observed MW:

43 kDa

Purification Method:

Antigen affinity purification

## Applications

Tested Applications:

WB, Indirect ELISA

Species Specificity:

human, mouse

## Background Information

OTUD3 is a kind of deubiquitinating enzyme that hydrolyzes 'Lys-6'- and 'Lys-11'-linked polyubiquitin. It's an important regulator of energy metabolism. Glucose and fatty acids trigger its nuclear translocation by CBP-dependent acetylation. In the nucleus, deubiquitinates and stabilizes the nuclear receptor PPAR $\delta$  regulating the expression of various genes involved in glucose and lipid metabolism and oxidative phosphorylation. The calculated MW of OTUD3 is 45 kDa, 29622-1-AP can detect the band around 43 kDa. (PubMed:23827681, 35675826).

## Storage

Storage:

Store at  $-80^{\circ}\text{C}$ .

**The product is shipped with ice packs. Upon receipt, store it immediately at  $-80^{\circ}\text{C}$**

Storage Buffer:

PBS only, pH7.3

For technical support and original validation data for this product please contact:

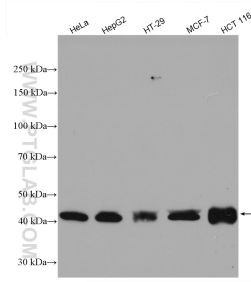
T: 4006900926

E: [Proteintech-CN@ptglab.com](mailto:Proteintech-CN@ptglab.com)

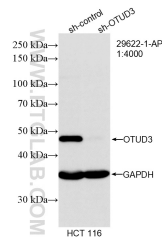
W: [ptgcn.com](http://ptgcn.com)

**This product is exclusively available under Proteintech Group brand and is not available to purchase from any other manufacturer.**

## Selected Validation Data



Various lysates were subjected to SDS PAGE followed by western blot with 29622-1-AP (OTUD3 antibody) at dilution of 1:2000 incubated at room temperature for 1.5 hours. This data was developed using the same antibody clone with 29622-1-PBS in a different storage buffer formulation.



WB result of OTUD3 antibody (29622-1-AP; 1:4000; incubated at room temperature for 1.5 hours) with sh-Control and sh-OTUD3 transfected HCT 116 cells. This data was developed using the same antibody clone with 29622-1-PBS in a different storage buffer formulation.