

For Research Use Only

# LAMTOR1 Polyclonal antibody, PBS Only

Catalog Number: 29611-1-PBS



## Basic Information

Catalog Number:

29611-1-PBS

Size:

1 mg/ml

Source:

Rabbit

Isotype:

IgG

Immunogen Catalog Number:

AG31215

GenBank Accession Number:

BC001706

GeneID (NCBI):

55004

UNIPROT ID:

Q6IAA8

Full Name:

chromosome 11 open reading frame

59

Calculated MW:

161 aa, 18 kDa

Observed MW:

18 kDa

Purification Method:

Antigen affinity purification

## Applications

Tested Applications:

WB, IF/ICC, Indirect ELISA

Species Specificity:

human

## Background Information

LAMTOR1 (Late Endosome/Lysosome-Associated Membrane Protein 1) is a membrane protein specifically localized to the surface of late endosomes/lysosomes and is involved in lysosomal transport and maturation. LAMTOR1 is a key component of the lysosomal articulating protein complex Ragulator, which is required for the localization of the Ragulator complex to lysosomes. LAMTOR1 is a key component of the lysosomal bridging protein complex Ragulator and is required for the localization of the Ragulator complex to the lysosome. LAMTOR1 is involved in autophagy, cell growth, immune regulation, cancer development, and regulatory pathways of glucose metabolism. Recent studies have shown that in calorie restriction, lithocholic acid activates AMPK through the glucose-sensing pathway ( the lysosomal pathway ) and the body senses the metabolic signals induced by calorie restriction and exerts its role in slowing down the effects of aging and prolonging the lifespan, whereas deletion of LAMTOR1 results in the inability of AMPK to be activated in order to play its role.

## Storage

Storage:

Store at -80°C.

**The product is shipped with ice packs. Upon receipt, store it immediately at -80°C**

Storage Buffer:

PBS Only

For technical support and original validation data for this product please contact:

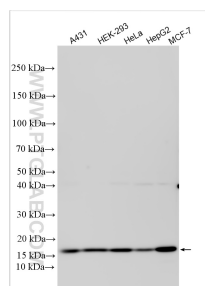
T: 4006900926

E: [Proteintech-CN@ptglab.com](mailto:Proteintech-CN@ptglab.com)

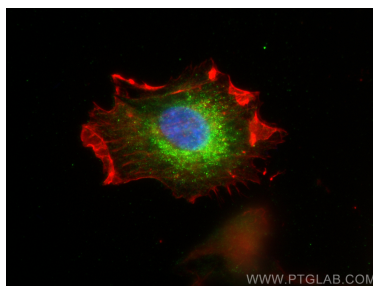
W: [ptgcn.com](http://ptgcn.com)

**This product is exclusively available under Proteintech Group brand and is not available to purchase from any other manufacturer.**

## Selected Validation Data



Various lysates were subjected to SDS PAGE followed by western blot with 29611-1-AP (LAMTOR1 antibody) at dilution of 1:30000 incubated at room temperature for 1.5 hours. This data was developed using the same antibody clone with 29611-1-PBS in a different storage buffer formulation.



Immunofluorescent analysis of (4% PFA) fixed U-87 MG cells using LAMTOR1 antibody (29611-1-AP) at dilution of 1:200 and Multi-rAb CoraLite® Plus 488-Goat Anti-Rabbit Recombinant Secondary Antibody (H+L) (RGAR002), CL594-phalloidin (red). This data was developed using the same antibody clone with 29611-1-PBS in a different storage buffer formulation.