

For Research Use Only

# RELB Polyclonal antibody, PBS Only

Catalog Number: 29601-1-PBS



## Basic Information

Catalog Number:

29601-1-PBS

Size:

1 mg/ml

Source:

Rabbit

Isotype:

IgG

Immunogen Catalog Number:

AG30334

GenBank Accession Number:

BC028013

GeneID (NCBI):

5971

UNIPROT ID:

Q01201

Full Name:

v-rel reticuloendotheliosis viral oncogene homolog B

Calculated MW:

62 kDa

Observed MW:

62-65 kDa

Purification Method:

Antigen affinity purification

## Applications

Tested Applications:

WB, IHC, IP, Indirect ELISA

Species Specificity:

human

## Background Information

RELB is one of the more unusual members of the NF- $\kappa$ B family, it is best known for its roles in lymphoid development, DC biology, and noncanonical signaling. RELB is capable of direct binding to the AhR that supports the xenobiotic-detoxifying pathway. RELB can regulate the circadian rhythm by directly binding to the BMAL partner of CLOCK.

## Storage

Storage:

Store at -80°C.

**The product is shipped with ice packs. Upon receipt, store it immediately at -80°C**

Storage Buffer:

PBS Only

For technical support and original validation data for this product please contact:

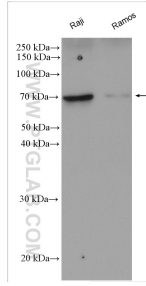
T: 4006900926

E: [Proteintech-CN@ptglab.com](mailto:Proteintech-CN@ptglab.com)

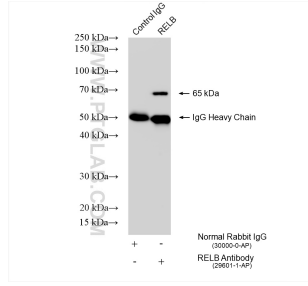
W: [ptgcn.com](http://ptgcn.com)

**This product is exclusively available under Proteintech Group brand and is not available to purchase from any other manufacturer.**

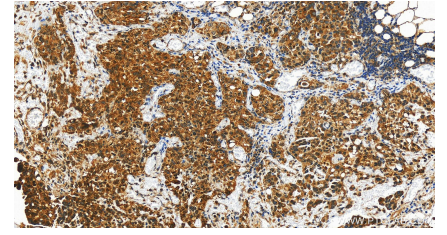
## Selected Validation Data



Various lysates were subjected to SDS PAGE followed by western blot with 29601-1-AP (RELB antibody) at dilution of 1:1500 incubated at room temperature for 1.5 hours. This data was developed using the same antibody clone with 29601-1-PBS in a different storage buffer formulation.



IP result of anti-RELB (IP:29601-1-AP, 4ug; Detection:29601-1-AP 1:1000) with Raji cells lysate 2840 ug. This data was developed using the same antibody clone with 29601-1-PBS in a different storage buffer formulation.



Immunohistochemical analysis of paraffin-embedded human ovary cancer tissue slide using 29601-1-AP (RELB antibody) at dilution of 1:200 (under 20x lens). Heat mediated antigen retrieval with Tris-EDTA buffer (pH 9.0). This data was developed using the same antibody clone with 29601-1-PBS in a different storage buffer formulation.