

For Research Use Only

# RELB Polyclonal antibody

Catalog Number: 29601-1-AP



## Basic Information

### Catalog Number:

29601-1-AP

### Size:

300 ug/ml

### Source:

Rabbit

### Isotype:

IgG

### Immunogen Catalog Number:

AG30334

### GenBank Accession Number:

BC028013

### GeneID (NCBI):

5971

### UNIPROT ID:

Q01201

### Full Name:

v-rel reticuloendotheliosis viral  
oncogene homolog B

### Calculated MW:

62 kDa

### Observed MW:

62-65 kDa

### Purification Method:

Antigen affinity purification

### Recommended Dilutions:

WB 1:500-1:3000

IP 0.5-4.0 ug for 1.0-3.0 mg of total  
protein lysate

IHC 1:50-1:500

## Applications

### Tested Applications:

WB, IHC, IP, ELISA

### Species Specificity:

human

**Note-IHC: suggested antigen retrieval with  
TE buffer pH 9.0; (\*) Alternatively, antigen  
retrieval may be performed with citrate  
buffer pH 6.0**

### Positive Controls:

WB: Raji cells, Ramos cells

IP: Raji cells,

IHC: human ovary cancer tissue,

## Background Information

RELB is one of the more unusual members of the NF- $\kappa$ B family, it is best known for its roles in lymphoid development, DC biology, and noncanonical signaling. RELB is capable of direct binding to the AhR that supports the xenobiotic-detoxifying pathway. RELB can regulate the circadian rhythm by directly binding to the BMAL partner of CLOCK.

## Storage

### Storage:

Store at -20°C. Stable for one year after shipment.

### Storage Buffer:

PBS with 0.02% sodium azide and 50% glycerol pH 7.3.

Aliquoting is unnecessary for -20°C storage

For technical support and original validation data for this product please contact:

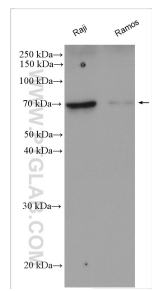
T: 4006900926

E: [Proteintech-CN@ptglab.com](mailto:Proteintech-CN@ptglab.com)

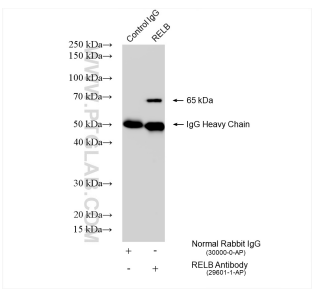
W: [ptgcn.com](http://ptgcn.com)

This product is exclusively available under Proteintech Group brand and is not available to purchase from any other manufacturer.

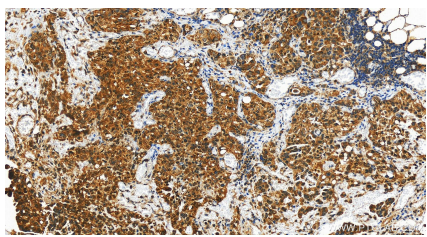
Selected Validation Data



Various lysates were subjected to SDS PAGE followed by western blot with 29601-1-AP (RELB antibody) at dilution of 1:1500 incubated at room temperature for 1.5 hours.



IP result of anti-RELB (IP:29601-1-AP, 4ug; Detection:29601-1-AP 1:1000) with Raji cells lysate 2840 ug.



Immunohistochemical analysis of paraffin-embedded human ovary cancer tissue slide using 29601-1-AP (RELB antibody) at dilution of 1:200 (under 20x lens). Heat mediated antigen retrieval with Tris-EDTA buffer (pH 9.0).