

For Research Use Only

GLS Polyclonal antibody

Catalog Number: 29519-1-AP

Featured Product

11 Publications



Basic Information

Catalog Number:

29519-1-AP

Size:

650 ug/ml

Source:

Rabbit

Isotype:

IgG

Immunogen Catalog Number:

AG31167

GenBank Accession Number:

NM_014905

GeneID (NCBI):

2744

UNIPROT ID:

O94925

Full Name:

glutaminase

Calculated MW:

73 kDa

Observed MW:

58 kDa, 65 kDa

Purification Method:

Antigen affinity purification

Recommended Dilutions:

WB 1:1000-1:6000

IF/ICC 1:50-1:500

Applications

Tested Applications:

WB, IF/ICC, ELISA

Cited Applications:

WB, IHC, IF

Species Specificity:

human

Cited Species:

human, mouse, rat

Positive Controls:

WB : COLO 320 cells, A549 cells, Hela cells, MCF-7 cells, SH-SY5Y cells

IF/ICC : L02 cells,

Background Information

GLS, also named as GLS1 and KIAA0838, belongs to the glutaminase family. It catalyzes the first reaction in the primary pathway for the renal catabolism of glutamine. Glutaminase-, glutamate-, and taurine-immunoreactive neurons develop neurofibrillary tangles in Alzheimer's disease (PMID:1672808). The glutaminase band in AA/C1 cells is more intense than in HT29 cells, in accordance with measurements of glutaminase activity, and had the same molecular mass of approx. 63 kDa. The bands for both cell lines are clearly different in size from both rat liver glutaminase (58 kDa) and rat kidney glutaminase (65 kDa) (PMID:12408749). It also reveals a molecular weight of 83-84 kDa as a phosphate-dependent glutaminase (PMID:447624;7512428). It has 3 isoforms named as KGA, GAM, GAC. This antibody can recognize KGA and GAC.

Notable Publications

Author	Pubmed ID	Journal	Application
Emily-Rose Martin	36339621	Front Pharmacol	WB
Kenji Miki	39563470	Cancer Metab	WB
Zhenyi Liu	39528118	J Ethnopharmacol	WB

Storage

Storage:

Store at -20°C. Stable for one year after shipment.

Storage Buffer:

PBS with 0.02% sodium azide and 50% glycerol pH 7.3.

Aliquoting is unnecessary for -20°C storage

For technical support and original validation data for this product please contact:

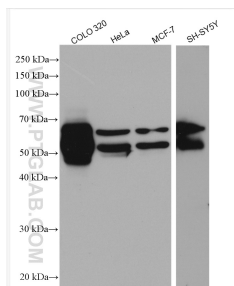
T: 4006900926

E: Proteintech-CN@ptglab.com

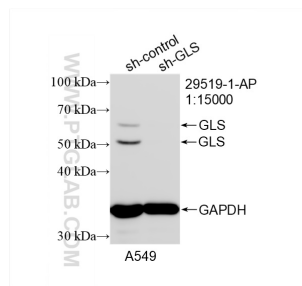
W: ptgcn.com

This product is exclusively available under Proteintech Group brand and is not available to purchase from any other manufacturer.

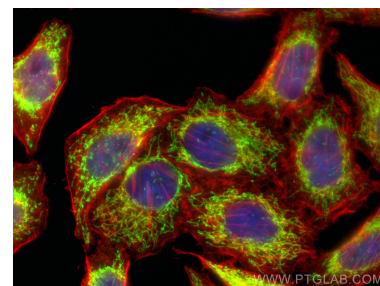
Selected Validation Data



COLO 320 cells were subjected to SDS PAGE followed by western blot with 29519-1-AP (GLS antibody) at dilution of 1:3000 incubated at room temperature for 1.5 hours.



WB result of GLS antibody (29519-1-AP; 1:15000; incubated at room temperature for 1.5 hours) with sh-Control and sh-GLS transfected A549 cells.



Immunofluorescent analysis of (4% PFA) fixed L02 cells using GLS antibody (29519-1-AP) at dilution of 1:200 and CoraLite®488-Conjugated AffiniPure Goat Anti-Rabbit IgG(H+L), CL594-phalloidin (red).