

For Research Use Only

PKMYT1 Polyclonal antibody

Catalog Number: 29489-1-AP

Featured Product



Basic Information

Catalog Number:

29489-1-AP

Size:

400 µg/ml

Source:

Rabbit

Isotype:

IgG

Immunogen Catalog Number:

AG30573

GenBank Accession Number:

NM_004203

GeneID (NCBI):

9088

UNIPROT ID:

Q99640

Full Name:

protein kinase, membrane associated
tyrosine/threonine 1

Calculated MW:

55 kDa

Observed MW:

60-75 kDa

Purification Method:

Antigen affinity purification

Recommended Dilutions:

WB 1:500-1:3000

Applications

Tested Applications:

WB, ELISA

Species Specificity:

Human

Positive Controls:

WB: MCF-7 cells, T-47D cells, A549 cells, MKN-45 cells,
NCI-H1299 cells

Background Information

PKMYT1, also known as MYT1, belongs to the WEE1 family. PKMYT1 functions to negatively regulate the Cdc2-cyclin B complexes by phosphorylating Cdc2 on threonine 14 and tyrosine 15. PKMYT1 has also been implicated in an increasing number of cancer types, including gastric cancer, non-small-cell lung cancer, hepatocellular carcinoma, glioblastoma, neuroblastoma, and colorectal cancer, in which overexpression of PKMYT1 generally correlates with poor prognosis and disease progression. PKMYT1 also has another key role in the cell cycle - regulating Golgi membrane reassembly following mitosis - and depletion of PKMYT1 leads to cell death. PKMYT1 was strongly phosphorylated during mitosis. This antibody can recognize interphase and mitotic phase PKMYT1. (PMID: 9268380, 32127662)

Storage

Storage:

Store at -20°C. Stable for one year after shipment.

Storage Buffer:

PBS with 0.02% sodium azide and 50% glycerol pH 7.3.

Aliquoting is unnecessary for -20°C storage

For technical support and original validation data for this product please contact:

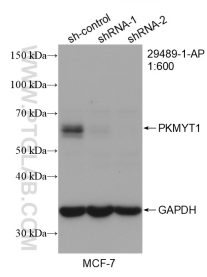
T: 4006900926

E: Proteintech-CN@ptglab.com

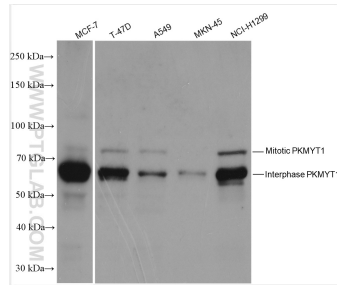
W: ptgcn.com

This product is exclusively available under Proteintech Group brand and is not available to purchase from any other manufacturer.

Selected Validation Data



WB result of PKMYT1 antibody (29489-1-AP; 1:600; incubated at room temperature for 1.5 hours) with sh-Control and sh-PKMYT1 transfected MCF-7 cells.



Various lysates were subjected to SDS PAGE followed by western blot with 29489-1-AP (PKMYT1 antibody) at dilution of 1:1500 incubated at room temperature for 1.5 hours.