

For Research Use Only

WEE1 Polyclonal antibody

Catalog Number: 29474-1-AP **4 Publications**



Basic Information

Catalog Number: 29474-1-AP	GenBank Accession Number: BC051831	Purification Method: Antigen affinity purification
Size: 450 µg/ml	GeneID (NCBI): 7465	Recommended Dilutions: WB 1:500-1:2000
Source: Rabbit	UNIPROT ID: P30291	
Isotype: IgG	Full Name: WEE1 homolog (S. pombe)	
Immunogen Catalog Number: AG30194	Calculated MW: 72 kDa	
	Observed MW: 72 kDa, 110 kDa	

Applications

Tested Applications: WB, ELISA	Positive Controls: WB : K-562 cells, mouse brain tissue, mouse heart tissue
Cited Applications: WB, IF	
Species Specificity: Human, mouse	
Cited Species: human, mouse	

Background Information

WEE1 kinase is a serine-threonine kinase that regulates G2/M checkpoint transition. WEE1 triggers G2/M arrest through inhibitory phosphorylation on Tyr15 of CDK1 (Cdc2) and preventing entry into mitosis to allow DNA repair during DNA damage (PMID: 27427153). The predicted native molecular weight for Wee1 based on the intact human Wee1 cDNA sequence is 72 kDa, whereas the 95-110 kDa protein is a highly modified product (PMID: 7568188). Others have shown that Wee1 is 70-72 kDa and 49-55 kDa (PMID: 12214061).

Notable Publications

Author	Pubmed ID	Journal	Application
Hanxi Yu	35355406	J Cell Mol Med	WB
Jianwu Gong	35127343	Anal Cell Pathol (Amst)	WB
Yi-Ming Ji	35504548	Reprod Toxicol	WB

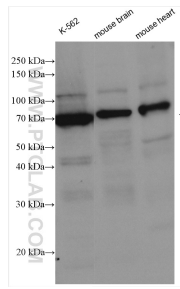
Storage

Storage:
Store at -20°C.
Storage Buffer:
PBS with 0.02% sodium azide and 50% glycerol pH 7.3.
Aliquoting is unnecessary for -20°C storage

For technical support and original validation data for this product please contact:
T: 4006900926 E: Proteintech-CN@ptglab.com W: ptgcn.com

This product is exclusively available under Proteintech Group brand and is not available to purchase from any other manufacturer.

Selected Validation Data



Various lysates were subjected to SDS PAGE followed by western blot with 29474-1-AP (WEE1 antibody) at dilution of 1:1000 incubated at room temperature for 1.5 hours.