

For Research Use Only

# VGLUT1 Polyclonal antibody

Catalog Number: 29469-1-AP



## Basic Information

Catalog Number:

29469-1-AP

Size:

850 ug/ml

Source:

Rabbit

Isotype:

IgG

Immunogen Catalog Number:

AG31193

GenBank Accession Number:

NM\_020309

GeneID (NCBI):

57030

UNIPROT ID:

Q9P2U7

Full Name:

solute carrier family 17 (sodium-dependent inorganic phosphate cotransporter), member 7

Calculated MW:

62 kDa

Observed MW:

55-60 kDa

Purification Method:

Antigen affinity purification

Recommended Dilutions:

WB 1:2000-1:12000

## Applications

Tested Applications:

WB, ELISA

Species Specificity:

human, mouse, rat

Positive Controls:

WB : unboiled mouse brain tissue, unboiled rat cerebellum tissue

## Background Information

Vesicular glutamate transporter 1 (VGLUT1) is a critical protein involved in the packaging and release of the neurotransmitter glutamate in synaptic vesicles. VGLUT1 is predominantly expressed in neurons that release glutamate, the primary excitatory neurotransmitter in the central nervous system, it is a marker of glutamatergic neurons. VGLUT1 has several isoforms with the molecular weight range from 53-61 kDa.

VGLUT1 is a multiple transmembrane protein, which is easily to aggregate if the sample is boiled or treated with high temperature, thus we recommend to use unboiled sample for the detection.

## Storage

Storage:

Store at -20°C. Stable for one year after shipment.

Storage Buffer:

PBS with 0.02% sodium azide and 50% glycerol pH 7.3.

Aliquoting is unnecessary for -20°C storage

For technical support and original validation data for this product please contact:

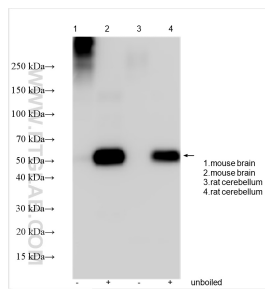
T: 4006900926

E: [Proteintech-CN@ptglab.com](mailto:Proteintech-CN@ptglab.com)

W: [ptgcn.com](http://ptgcn.com)

This product is exclusively available under Proteintech Group brand and is not available to purchase from any other manufacturer.

## Selected Validation Data



Various tissue were subjected to SDS PAGE followed by western blot with 29469-1-AP (VGLUT1 antibody) at dilution of 1:6000 incubated at room temperature for 1.5 hours.