

For Research Use Only

BRCA2 Polyclonal antibody

Catalog Number: 29450-1-AP

7 Publications



Basic Information

Catalog Number:

29450-1-AP

Size:

1300 µg/ml

Source:

Rabbit

Isotype:

IgG

Immunogen Catalog Number:

AG31064

GenBank Accession Number:

NM_000059

GeneID (NCBI):

675

UNIPROT ID:

P51587

Full Name:

breast cancer 2, early onset

Calculated MW:

384 kDa

Observed MW:

384 kDa

Purification Method:

Antigen affinity purification

Recommended Dilutions:

WB 1:1000-1:8000

Applications

Tested Applications:

WB, ELISA

Cited Applications:

WB

Species Specificity:

Human

Cited Species:

human

Positive Controls:

WB : HeLa cells, HepG2 cells, MCF-7 cells

Background Information

BRCA2, also named as FACD and FANCD1, is involved in double-strand break repair and/or homologous recombination. BRCA2 may participate in S phase checkpoint activation. Defects in BRCA2 are a cause of genetic susceptibility to breast cancer (BC) which also called susceptibility to familial breast-ovarian cancer type 2 (BROVCA2).

Notable Publications

Author	Pubmed ID	Journal	Application
Taihao Chang	36576015	Prostate	WB
Wei Huang	39619421	Oncol Lett	WB
Leyuan Chen	39072709	J Enzyme Inhib Med Chem	WB

Storage

Storage:

Store at -20°C.

Storage Buffer:

PBS with 0.02% sodium azide and 50% glycerol pH 7.3.

Aliquoting is unnecessary for -20°C storage

For technical support and original validation data for this product please contact:

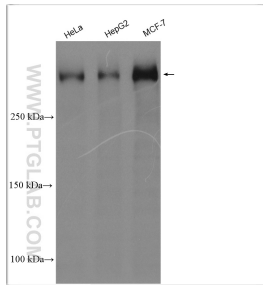
T: 4006900926

E: Proteintech-CN@ptglab.com

W: ptgcn.com

This product is exclusively available under Proteintech Group brand and is not available to purchase from any other manufacturer.

Selected Validation Data



Various lysates were subjected to SDS PAGE followed by western blot with 29450-1-AP (BRCA2 antibody) at dilution of 1:4000 incubated at room temperature for 1.5 hours.