

For Research Use Only

YTHDC1 Polyclonal antibody

Catalog Number: 29441-1-AP

Featured Product

14 Publications



Basic Information

Catalog Number:

29441-1-AP

Size:

750 µg/ml

Source:

Rabbit

Isotype:

IgG

Immunogen Catalog Number:

AG31459

GenBank Accession Number:

BC053863

GeneID (NCBI):

91746

UNIPROT ID:

Q96MU7

Full Name:

YTH domain containing 1

Calculated MW:

85 kDa

Observed MW:

~100 kDa

Purification Method:

Antigen affinity purification

Recommended Dilutions:

WB 1:5000-1:50000

IP 0.5-4.0 µg for 1.0-3.0 mg of total protein lysate

IHC 1:50-1:500

Applications

Tested Applications:

WB, IP, IHC, ELISA

Cited Applications:

WB, IHC, IF, IP, RIP

Species Specificity:

Human, mouse, rat

Cited Species:

human, mouse

Note-IHC: suggested antigen retrieval with **TE buffer pH 9.0; (*) Alternatively, antigen retrieval may be performed with citrate buffer pH 6.0**

Positive Controls:

WB: HEK-293 cells, HepG2 cells, HSC-T6 cells, NIH/3T3 cells, MDA-MB-231 cells

IP: HEK-293 cells,

IHC: human colon cancer tissue,

Background Information

YTHDC1, containing 1 YTH domain, is one of the m6A-binding proteins that can recognize and bind to the m6A methylation site and plays a specific role in gene expression. YTHDC1 is constitutively enriched in the nucleus. It regulates mRNA splicing by bridging the interactions between the trans- and cis-regulatory elements to bind targeted mRNAs. YTHDC1 mediates the export of m6A modified mRNA from the nucleus to the cytoplasm by interacting with SRSF3, which is an essential factor driving the tumorigenic process in various types of cancers including breast cancer, colon cancer, ovarian cancer, osteosarcoma, and glioblastoma (32368386).

Notable Publications

Author	Pubmed ID	Journal	Application
Kusuma Suphakhong	36183833	J Biol Chem	WB
Zhenwei Li	34825733	J Clin Lab Anal	WB
Fanhua Kong	36434140	Discov Oncol	WB

Storage

Storage:

Store at -20°C. Stable for one year after shipment.

Storage Buffer:

PBS with 0.02% sodium azide and 50% glycerol pH 7.3.

Aliquoting is unnecessary for -20°C storage

For technical support and original validation data for this product please contact:

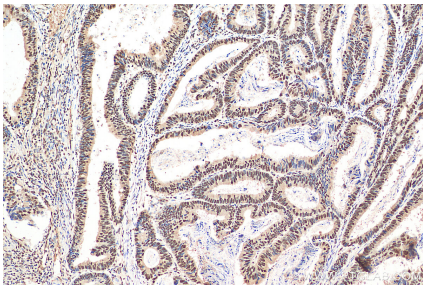
T: 4006900926

E: Proteintech-CN@ptglab.com

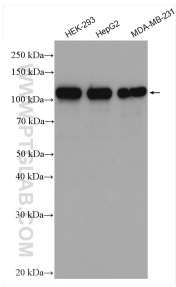
W: ptgcn.com

This product is exclusively available under Proteintech Group brand and is not available to purchase from any other manufacturer.

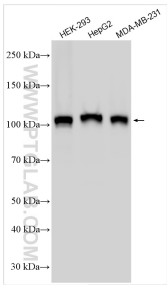
Selected Validation Data



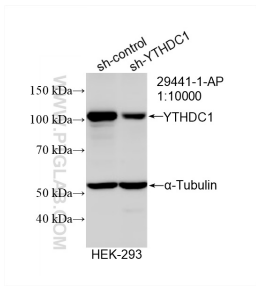
Immunohistochemical analysis of paraffin-embedded human colon cancer tissue slide using 29441-1-AP (YTHDC1 antibody) at dilution of 1:200 (under 10x lens). Heat mediated antigen retrieval with Tris-EDTA buffer (pH 9.0).



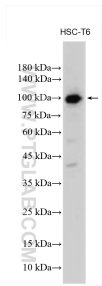
Various lysates were subjected to SDS PAGE followed by western blot with 29441-1-AP (YTHDC1 antibody) at dilution of 1:5000 incubated at room temperature for 1.5 hours.



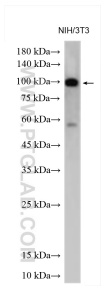
Various lysates were subjected to SDS PAGE followed by western blot with 29441-1-AP (YTHDC1 antibody) at dilution of 1:10000 incubated at room temperature for 1.5 hours.



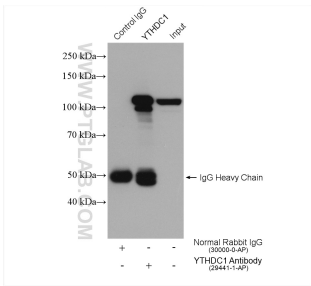
WB result of YTHDC1 antibody (29441-1-AP; 1:10000; incubated at room temperature for 1.5 hours) with sh-Control and sh-YTHDC1 transfected HEK-293 cells.



Various lysates were subjected to SDS PAGE followed by western blot with 29441-1-AP (YTHDC1 antibody) at dilution of 1:5000 incubated at room temperature for 1.5 hours.



Various lysates were subjected to SDS PAGE followed by western blot with 29441-1-AP (YTHDC1 antibody) at dilution of 1:5000 incubated at room temperature for 1.5 hours.



IP result of anti-YTHDC1 (IP:29441-1-AP, 4ug; Detection:29441-1-AP 1:2000) with HEK-293 cells lysate 1800 ug.