

For Research Use Only

Fibrillin 1 Polyclonal antibody

Catalog Number: 29425-1-AP

1 Publications



Basic Information

Catalog Number:

29425-1-AP

Concentration:

550 ug/ml

Source:

Rabbit

Isotype:

IgG

Immunogen Catalog Number:

AG30283

GenBank Accession Number:

BC146854

GeneID (NCBI):

2200

UNIPROT ID:

P35555

Full Name:

fibrillin 1

Observed MW:

350 kDa

Purification Method:

Antigen affinity purification

Recommended Dilutions:

WB 1:500-1:2000

IHC 1:50-1:500

IF/ICC 1:200-1:800

Applications

Tested Applications:

WB, IHC, IF/ICC, ELISA

Cited Applications:

WB, ColP

Species Specificity:

human

Cited Species:

mouse

Note-IHC: suggested antigen retrieval with TE buffer pH 9.0; (*) Alternatively, antigen retrieval may be performed with citrate buffer pH 6.0

Positive Controls:

WB : HeLa cells,

IHC : human endometrial cancer tissue, human normal colon

IF/ICC : A431 cells,

Background Information

Fibrillin 1 is a 350 kDa large extracellular matrix glycoprotein that formed thread-like microfibril filaments, which provided structural support for tissues, formed elastic fibers in the skin and vessels, regulated the availability of the transforming growth factor beta (TGF- β) protein, and modulated the microenvironment. Fibrillin 1 contains a large number of cysteine-rich epidermal growth factor (EGF)-like domains, most capable of binding calcium ions (cbEGF-like), and a few motifs homologous to the binding protein for transforming growth factor beta (TGF β 1-BP)-like module (PMID: 29220879, PMID: 35234370).

Notable Publications

Author	Pubmed ID	Journal	Application
Dunpeng Cai	39120288	Cells	WB, ColP

Storage

Storage:

Store at -20°C. Stable for one year after shipment.

Storage Buffer:

PBS with 0.02% sodium azide and 50% glycerol pH 7.3.

Aliquoting is unnecessary for -20°C storage

For technical support and original validation data for this product please contact:

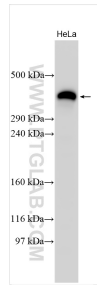
T: 4006900926

E: Proteintech-CN@ptglab.com

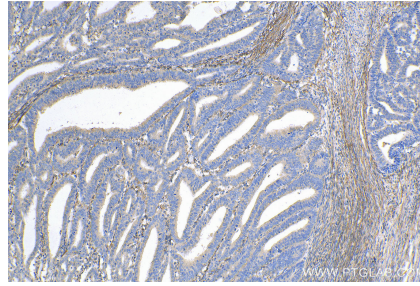
W: ptgcn.com

This product is exclusively available under Proteintech Group brand and is not available to purchase from any other manufacturer.

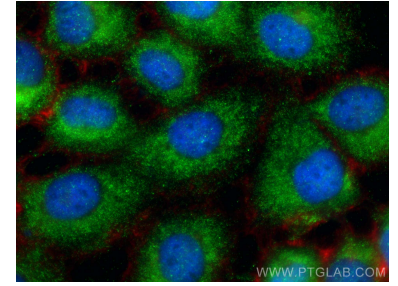
Selected Validation Data



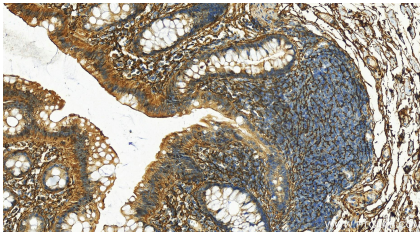
HeLa cells were subjected to Tris-acetate gel system followed by western blot with 29425-1-AP (Fibrillin 1 antibody) at dilution of 1:1000 incubated at room temperature for 1.5 hours.



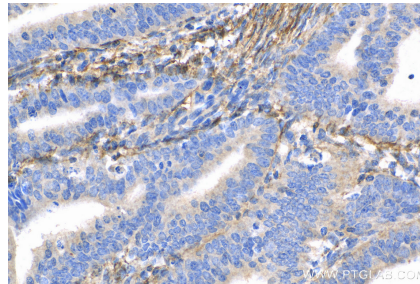
Immunohistochemical analysis of paraffin-embedded human endometrial cancer tissue slide using 29425-1-AP (Fibrillin 1 antibody) at dilution of 1:200 (under 10x lens). Heat mediated antigen retrieval with Tris-EDTA buffer (pH 9.0).



Immunofluorescent analysis of (-20°C Ethanol) fixed A431 cells using Fibrillin 1 antibody (29425-1-AP) at dilution of 1:400 and Coralite®488-Conjugated AffiniPure Goat Anti-Rabbit IgG(H+L) (SA00013-2), CL594-phalloidin (red).



Immunohistochemical analysis of paraffin-embedded human colon tissue slide using 29425-1-AP (Fibrillin 1 antibody) at dilution of 1:200 (under 20x lens). Heat mediated antigen retrieval with Tris-EDTA buffer (pH 9.0).



Immunohistochemical analysis of paraffin-embedded human endometrial cancer tissue slide using 29425-1-AP (Fibrillin 1 antibody) at dilution of 1:200 (under 40x lens). Heat mediated antigen retrieval with Tris-EDTA buffer (pH 9.0).