

For Research Use Only

# EHBP1L1 Polyclonal antibody

Catalog Number: 29383-1-AP



## Basic Information

|   |   |  |
|---|---|--|
| <b>Catalog Number:</b><br>29383-1-AP        | <b>GenBank Accession Number:</b><br>NM_001099409        | <b>Purification Method:</b><br>Antigen affinity purification |
| <b>Source:</b><br>Rabbit                    | <b>GeneID (NCBI):</b><br>254102                         | <b>Recommended Dilutions:</b><br>WB: 1:500-1:2000            |
| <b>Isotype:</b><br>IgG                      | <b>UNIPROT ID:</b><br>Q8N3D4                            |  |
| <b>Immunogen Catalog Number:</b><br>AG29796 | <b>Full Name:</b><br>EH domain binding protein 1-Like 1 |  |
|   | <b>Calculated MW:</b><br>162 kDa                        |  |
|   | <b>Observed MW:</b><br>162 kDa                          |  |

## Applications

|  |  |
|--|--|
| <b>Tested Applications:</b><br>WB, ELISA         | <b>Positive Controls:</b><br>WB : mouse testis tissue, rat testis tissue |
| <b>Species Specificity:</b><br>human, mouse, rat |  |

## Background Information

EHBP1L1 is an adapter protein localized on recycling endosomes. It regulates apical-directed transport in polarized epithelial cells. Additionally, EHBP1L1 is crucial for erythroblast enucleation by promoting nuclear polarization in coordination with Rab10, Bin1, and dynamin. It also maintains the proper morphology and structural stability of erythrocytes.

## Storage

**Storage:**  
Store at -20°C. Stable for one year after shipment.  
**Storage Buffer:**  
PBS with 0.02% sodium azide and 50% glycerol, pH7.3  
Aliquoting is unnecessary for -20°C storage

For technical support and original validation data for this product please contact:

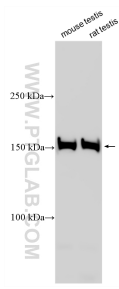
T: 4006900926

E: [Proteintech-CN@ptglab.com](mailto:Proteintech-CN@ptglab.com)

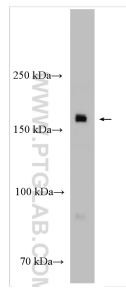
W: [ptgcn.com](http://ptgcn.com)

This product is exclusively available under Proteintech Group brand and is not available to purchase from any other manufacturer.

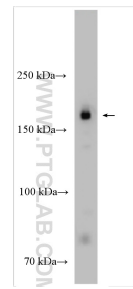
## Selected Validation Data



Various lysates were subjected to SDS PAGE followed by western blot with 29383-1-AP (EHP1L1 antibody) at dilution of 1:3000 incubated at room temperature for 1.5 hours.



rat testis tissue were subjected to SDS PAGE followed by western blot with 29383-1-AP (EHP1L1 antibody) at dilution of 1:1000 incubated at room temperature for 1.5 hours.



mouse testis tissue were subjected to SDS PAGE followed by western blot with 29383-1-AP (EHP1L1 antibody) at dilution of 1:1000 incubated at room temperature for 1.5 hours.