

# INPP5E Polyclonal antibody

Catalog Number: 29353-1-AP

## Basic Information

**Catalog Number:**

29353-1-AP

**Size:**

500 µg/ml

**Source:**

Rabbit

**Isotype:**

IgG

**Immunogen Catalog Number:**

AG30305

**GenBank Accession Number:**

BC028032

**GeneID (NCBI):**

56623

**UNIPROT ID:**

Q9NRR6

**Full Name:**

inositol polyphosphate-5-phosphatase, 72 kDa

**Calculated MW:**

644 aa, 70 kDa

**Observed MW:**

70 kDa

**Purification Method:**

Antigen affinity purification

**Recommended Dilutions:**

WB 1:500-1:3000

IF/ICC 1:50-1:500

## Applications

**Tested Applications:**

IF/ICC, WB, ELISA

**Species Specificity:**

Human, mouse, rat

**Positive Controls:**

WB : HEK-293 cells, mouse testis tissue, rat testis tissue

IF/ICC : ARPE-19 cells,

## Background Information

INPP5E (72 kDa inositol polyphosphate 5-phosphatase) converts phosphatidylinositol 3,4,5-trisphosphate (PtdIns 3,4,5-P<sub>3</sub>) to PtdIns-P<sub>2</sub>. In mouse, highest protein expression was in brain, heart, and testis, with lower expression in thymus and lung, and very little expression in kidney, spleen, and liver (PMID:10764818). Defects in INPP5E are the cause of Joubert syndrome type 1 (JBTS1) and mental retardation-truncal obesity-retinal dystrophy-micropenis (MORMS) (PMID:19668215). It has 2 isoforms with the molecular mass of 66 kDa and 70 kDa.

## Storage

**Storage:**

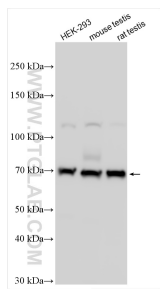
Store at -20°C. Stable for one year after shipment.

**Storage Buffer:**

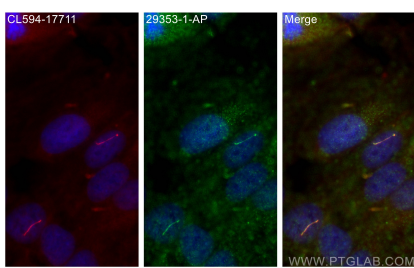
PBS with 0.02% sodium azide and 50% glycerol pH 7.3.

Aliquoting is unnecessary for -20°C storage

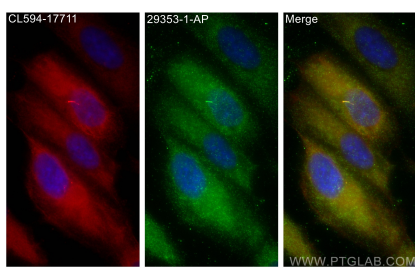
## Selected Validation Data



Various lysates were subjected to SDS PAGE followed by western blot with 29353-1-AP (INPP5E antibody) at dilution of 1:1500 incubated at room temperature for 1.5 hours.



Immunofluorescent analysis of (4% PFA) fixed ARPE-19 cells using INPP5E antibody (29353-1-AP) at dilution of 1:200 and CoraLite®488-Conjugated AffiniPure Goat Anti-Rabbit IgG(H+L).



Immunofluorescent analysis of (-20°C Methanol) fixed ARPE-19 cells using INPP5E antibody (29353-1-AP) at dilution of 1:200 and CoraLite®488-Conjugated AffiniPure Goat Anti-Rabbit IgG(H+L).