

For Research Use Only

NPPC Polyclonal antibody, PBS Only

Catalog Number: 29352-1-PBS



Basic Information

Catalog Number:

29352-1-PBS

Concentration:

1 mg/ml

Source:

Rabbit

Isotype:

IgG

Immunogen Catalog Number:

AG29609

GenBank Accession Number:

NM_024409

GeneID (NCBI):

4880

UNIPROT ID:

P23582

Full Name:

natriuretic peptide precursor C

Calculated MW:

13 kDa

Purification Method:

Antigen affinity purification

Applications

Tested Applications:

IHC, IF-P, Indirect ELISA

Species Specificity:

human, mouse, rat

Background Information

NPPC (C-type natriuretic peptide) is also named as CNP2, and belongs to the natriuretic peptide family. More recent studies have shown that in growing and preovulatory follicles, granulosa cells secrete into the follicular fluid, a C-type natriuretic peptide (NPPC, also known as CNP) capable of binding to cumulus cells membrane natriuretic peptide receptor 2 (NPR2, also known as guanylate cyclase B). The CNP/NPR2 complex, acting actively as guanylate cyclase, increases the concentration of cGMP both in cumulus cells and, indirectly, in the oocyte, maintaining meiosis arrest. The cAMP level is maintained due to the upstream activity type C natriuretic peptide (CNP, NPPC), produced by the granulosa cells, which is responsible for the production of cyclic guanosine monophosphate (cGMP) after binding to a specific NPR2 receptor (PMID: 35209923, PMID: 25183874, PMID: 20947764).

Storage

Storage:

Store at -80°C.

The product is shipped with ice packs. Upon receipt, store it immediately at -80°C

Storage Buffer:

PBS only, pH7.3

For technical support and original validation data for this product please contact:

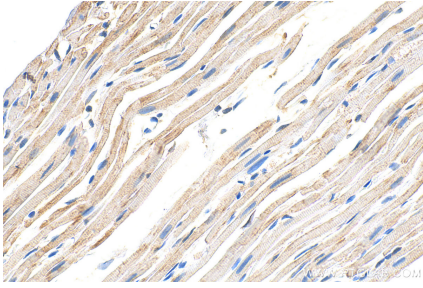
T: 4006900926

E: Proteintech-CN@ptglab.com

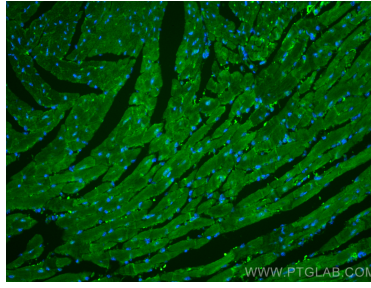
W: ptgcn.com

This product is exclusively available under Proteintech Group brand and is not available to purchase from any other manufacturer.

Selected Validation Data



Immunohistochemical analysis of paraffin-embedded rat heart tissue slide using 29352-1-AP (NPPC antibody) at dilution of 1:200 (under 40x lens). Heat mediated antigen retrieval with Tris-EDTA buffer (pH 9.0). This data was developed using the same antibody clone with 29352-1-PBS in a different storage buffer formulation.



Immunofluorescent analysis of (4% PFA) fixed paraffin-embedded mouse heart tissue using NPPC antibody (29352-1-AP) at dilution of 1:200 and CoraLite®488-Conjugated Goat Anti-Rabbit IgG(H+L) (SA00013-2). Heat mediated antigen retrieval with Tris-EDTA buffer (pH 9.0). This data was developed using the same antibody clone with 29352-1-PBS in a different storage buffer formulation.