

For Research Use Only

GPX1 Polyclonal antibody

Catalog Number: 29329-1-AP

Featured Product

21 Publications



Basic Information

Catalog Number:

29329-1-AP

Concentration:

550 µg/ml

Source:

Rabbit

Isotype:

IgG

Immunogen Catalog Number:

AG31101

GenBank Accession Number:

BC000742

GeneID (NCBI):

2876

UNIPROT ID:

P07203

Full Name:

glutathione peroxidase 1

Calculated MW:

22 kDa

Observed MW:

22 kDa

Purification Method:

Antigen affinity purification

Recommended Dilutions:

WB 1:2000-1:10000

Applications

Tested Applications:

WB, ELISA

Cited Applications:

WB, IF

Species Specificity:

Human, Mouse, Rat

Cited Species:

human, mouse, rat, pig, chicken

Positive Controls:

WB : HEK-293 cells, THP-1 cells, mouse kidney tissue, rat kidney tissue, SMMC-7721 cells

Background Information

Gpx protein, known as selenoprotein, consists selenium in its catalytic site. Gpx1 is an abundant isoform, which involves in scavenging endogenous ROS using electron provided by reduced glutathione and ubiquitously expressed the cytoplasm and mitochondria of all cell types. (PMID: 30632027)

Notable Publications

| Author | Pubmed ID | Journal | Application |
|------------|-----------|-------------------------|-------------|
| Jiayu Li | 36296678 | Molecules | WB |
| Yanan Chen | 36225099 | J Agric Food Chem | WB |
| Pei Qian | 35745637 | Pharmaceuticals (Basel) | WB |

Storage

Storage:

Store at -20°C. Stable for one year after shipment.

Storage Buffer:

PBS with 0.02% sodium azide and 50% glycerol pH 7.3.

Aliquoting is unnecessary for -20°C storage

For technical support and original validation data for this product please contact:

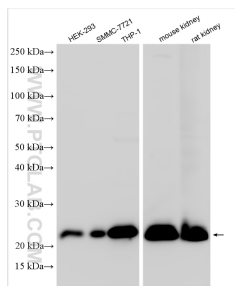
T: 4006900926

E: Proteintech-CN@ptglab.com

W: ptgcn.com

This product is exclusively available under Proteintech Group brand and is not available to purchase from any other manufacturer.

Selected Validation Data



Various lysates were subjected to SDS PAGE followed by western blot with 29329-1-AP (GPX1 antibody) at dilution of 1:5000 incubated at room temperature for 1.5 hours.